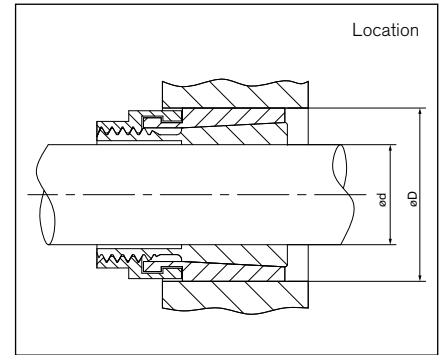
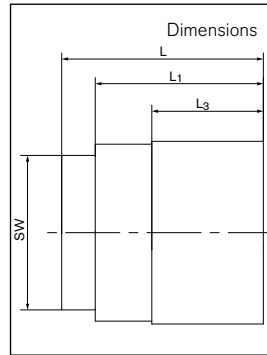
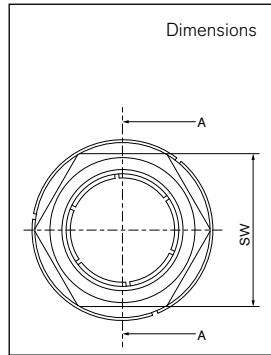


RINGFEDER® Locking Assemblies with central lock nut

# RfN 7070



**Basic dimensions when screws are not tightened**

- |  |   |
|--|---|
| <b>d</b> = Inner diameter                                  | <b>SW</b> = Wrench size                                       |
| <b>D</b> = Outer diameter                                  | <b>T</b> = Transmissible torque at given $T_A$                |
| <b>L</b> = Overall length                                  | <b>F<sub>ax</sub></b> = Transmissible axial force             |
| <b>L<sub>1</sub></b> = Overall length without clamping nut | <b>P<sub>N</sub></b> = Surface pressure on hub at given $T_A$ |
| <b>L<sub>3</sub></b> = Width of inner ring                 | <b>T<sub>A</sub></b> = Max. tightened torque of the screws    |
|  | <b>G<sub>w</sub></b> = Weight                                 |

Locking Assembly dimensions						Wrench size	Transmissible torques or axial forces		Surface pressure Hub	Locking nut	
d	x	D	L	L <sub>1</sub>	L <sub>3</sub>	SW	T	F <sub>ax</sub>	P <sub>N</sub>	T <sub>A</sub>	G <sub>w</sub>
mm			mm				Nm	kN	N/mm <sup>2</sup>	Nm	kg
5	x	16	19	16	9,5	13	10	4	110	18	0,014
6	x	16	19	16	9,5	13	13	4,3	110	18	0,013
7	x	20	22	19	11	16	13	3,7	65	20	0,028
8	x	20	22	19	11	16	15	3,75	65	20	0,027
9	x	20	22	19	11	16	18	4	65	20	0,026
10	x	23	25,5	20,5	12,5	19	23	4,6	55	25	0,042
11	x	23	25,5	20,5	12,5	19	25	4,5	55	25	0,041
12	x	23	25,5	20,5	12,5	19	28	4,6	55	25	0,04
14	x	26	28,5	23,5	16	22	46	6,6	64	50	0,056
15	x	26	28,5	23,5	16	22	49	6,59	64	50	0,055
16	x	26	28,5	23,5	16	22	52	6,5	64	50	0,054

Ordering example: RfN 7070

Type	d	D
RfN 7070	10	23

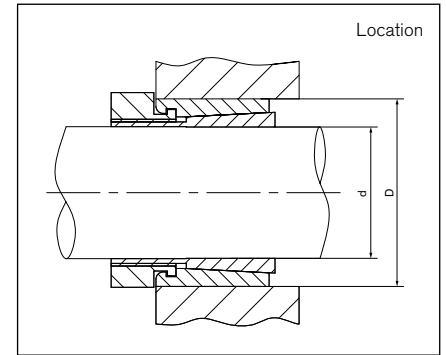
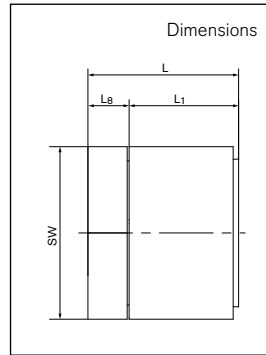
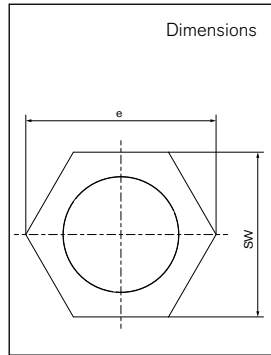
Technical Information

- Surface finishes: Shaft and hub bores  $R_a \leq 1,6 \mu\text{m}$
- Tolerances: Shaft: h8 · Hub: H8

Subject to technical change.

RINGFEDER® Locking Assemblies with central lock nut

# RfN 7075



**Basic dimensions when screws are not tightened**

- d** = Inner diameter
- D** = Outer diameter
- L** = Overall length
- L<sub>1</sub>** = Overall length without clamping nut
- L<sub>8</sub>** = Overhang length

- SW** = Wrench size
- e** = Width across corners of the nut
- T** = Transmissible torque at given T<sub>A</sub>
- PN** = Surface pressure on hub at given T<sub>A</sub>
- T<sub>A</sub>** = Max. tightened torque of the screws
- Gw** = Weight

Locking Assembly dimensions						Wrench size		Transmissible torques or axial forces		Surface pressure Hub	Locking nut	
d	x	D	L	L <sub>1</sub>	L <sub>8</sub>	SW	e	T		PN	T <sub>A</sub>	Gw
mm			mm			mm	mm	Nm		N/mm <sup>2</sup>	Nm	kg
17	x	32	33	21	11	30	33,5	174		100	110	0,2
18	x	32	33	21	11	30	33,5	198		92	110	0,19
19	x	32	33	21	11	30	33,5	223		85	110	0,19
20	x	35	35	23	11	32	35,7	258		82	150	0,27
22	x	35	35	23	11	32	35,7	293		80	150	0,25
24	x	38	35	23	11	36	40	330		87	185	0,33
25	x	38	35	23	11	36	40	368		94	185	0,3
28	x	45	37	25	11	46	51,3	459		101	300	0,36
30	x	45	37	25	11	46	51,3	550		108	300	0,34
32	x	50	41	28	12	50	55,8	616		100	265	0,37
35	x	50	41	28	12	50	55,8	681		91	265	0,35

Ordering example: RfN 7075

Type	d	D
RfN 7075	17	32

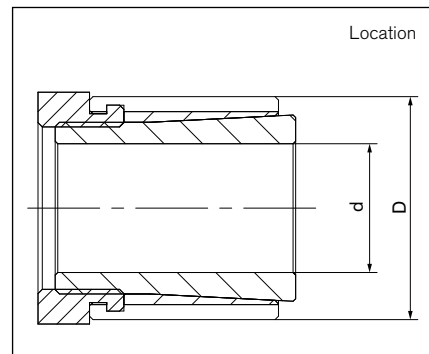
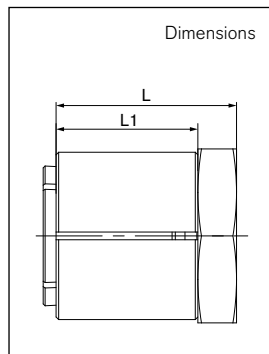
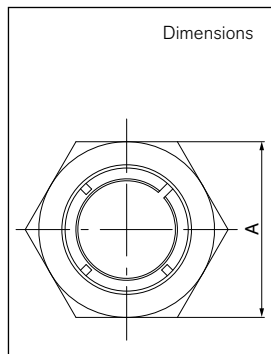
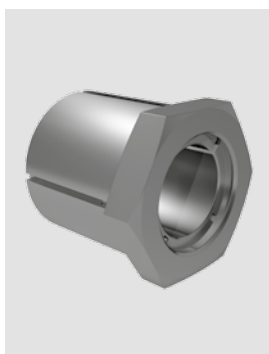
Technical Information

- Surface finishes: Shaft and hub bores R<sub>a</sub> ≤ 1,6 μm
- Tolerances: Shaft: h8 · Hub: H8

Subject to technical change.

RINGFEDER® Locking Assemblies with central lock nut

# RfN 7080



Basic dimensions when screws are not tightened

- d** = Inner diameter
- D** = Outer diameter
- L** = Overall width
- L<sub>1</sub>** = Installation length without clamping nut
- SW** = Wrench size
- T** = Transmissible torque at given  $T_A$
- F<sub>ax</sub>** = Transmissible axial force
- pw** = Surface pressure on shaft at given  $T_A$
- PN** = Surface pressure on hub at given  $T_A$
- T<sub>A</sub>** = Max. tightened torque of the clamping screws
- Gw** = Weight

Locking Assembly dimensions				Wrench size	Transmissible torques or axial forces			Surface pressure		Locking nut	
d	x	D	L	L <sub>1</sub>	SW	T	F <sub>ax</sub>	Shaft pw	Hub PN	T <sub>A</sub>	Gw
mm			mm	mm	mm	Nm	4	N/mm <sup>2</sup>		Nm	kg
5	x	14	19	15	14	10	4	264	97	10	0,018
6	x	14	19	15	14	12	4	220	97	10	0,017
7	x	16	22	17	16	20	5,8	205	91	17	0,026
8	x	16	22	17	16	23	5,8	180	91	17	0,024
9	x	20	24	19	22	43	9,7	246	115	35	0,047
10	x	20	24	19	22	48	9,7	221	115	35	0,044
11	x	22	24	19	22	59	10,8	225	117	44	0,051
12	x	22	24	19	22	65	10,8	207	117	44	0,048
14	x	26	28	22	27	93	13,3	179	99	65	0,081
15	x	26	28	22	27	99	13,3	167	99	65	0,075
16	x	26	28	22	27	106	13,3	156	99	65	0,071
17	x	32	34	26	32	163	19,2	187	108	110	0,149
18	x	35	36	27	36	223	24,8	224	125	160	0,197
19	x	35	36	27	36	235	24,8	213	125	160	0,189
20	x	35	36	27	36	248	24,8	202	125	160	0,182

To continue see next page

## RINGFEDER® Locking Assemblies with central lock nut

**RfN 7080**

Locking Assembly dimensions					Wrench size SW	Transmissible torques or axial forces T	$F_{ax}$	Surface pressure		Locking nut $T_A$	Gw
d	x	D	L	$L_1$				Shaft PW	Hub PN		
mm			mm	mm	mm	Nm	4	N/mm <sup>2</sup>		Nm	kg
22	x	42	41	30	46	349	31,7	197	111	250	0,343
24	x	42	41	30	46	381	31,7	181	111	250	0,322
25	x	42	41	30	46	397	31,7	174	111	355	0,31
28	x	47	44	33	50	565	40,3	174	110	355	0,403
30	x	47	44	33	50	605	40,3	163	110	490	0,375
32	x	55	51	38	55	764	47,7	166	102	490	0,626
35	x	55	51	38	55	836	47,7	152	102	490	0,566
38	x	62	58	43	65	1140	60,2	155	108	700	0,897
40	x	62	58	43	65	1200	60,2	147	108	700	0,842
42	x	65	63	48	65	1250	59,6	120	87	740	0,959
45	x	65	63	48	65	1340	59,6	112	87	740	0,861
50	x	75	73	50	75	2320	92	116	77	1290	1,38

## Ordering example: RfN 7080

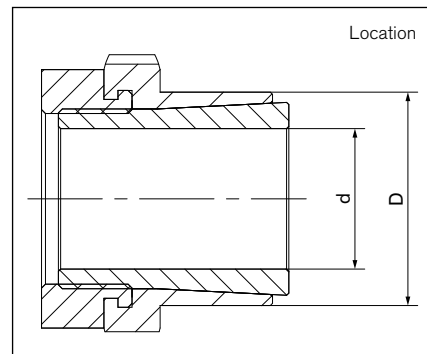
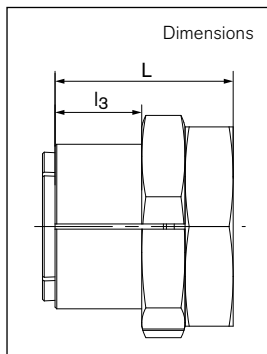
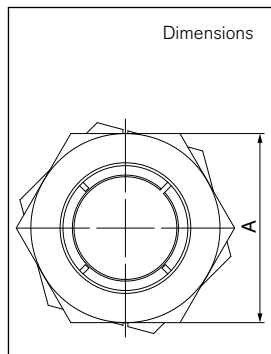
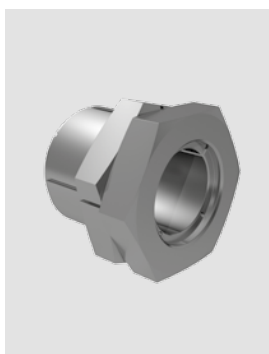
Type	d	D
RfN 7080	24	42

Subject to technical change.

RINGFEDER® Locking Assemblies with central lock nut

# RfN 7085

corrosion protected



Basic dimensions when screws are not tightened

- d** = Inner diameter
- D** = Outer diameter
- L** = Overall width
- l<sub>3</sub>** = Clamping length

- SW** = Wrench size
- T** = Transmissible torque at given  $T_A$
- F<sub>ax</sub>** = Transmissible axial force
- p<sub>w</sub>** = Surface pressure on shaft at given  $T_A$
- p<sub>N</sub>** = Surface pressure on hub at given  $T_A$

- T<sub>A</sub>** = Max. tightened torque of the screws
- G<sub>w</sub>** = Weight

Locking Assembly dimensions				Wrench size	Transmissible torques or axial forces	Surface pressure		Locking nut		
d	x	D	L	SW	T	F <sub>ax</sub>	Shaft p <sub>w</sub>	Hub p <sub>N</sub>	T <sub>A</sub>	G <sub>w</sub>
mm			mm	mm	Nm	kN	N/mm <sup>2</sup>		Nm	kg
5	x	12	19	14	10	4	264	119	10	0,016
6	x	12	19	14	12	4	220	119	10	0,015
7	x	14	22	16	20	5,8	205	121	17	0,023
8	x	14	22	16	23	5,8	180	121	17	0,021
9	x	18	24	22	43	9,7	246	144	35	0,047
10	x	18	24	22	48	9,7	221	144	35	0,044
11	x	20	24	22	59	10,8	225	145	44	0,047
12	x	20	24	22	65	10,8	207	145	44	0,044
14	x	24	28	27	93	13,3	179	118	65	0,076
15	x	24	28	27	99	13,3	167	118	65	0,072
16	x	24	28	27	106	13,3	156	118	65	0,067
17	x	26	34	32	163	19,2	187	148	110	0,122
18	x	30	36	36	223	24,8	224	155	160	0,176
19	x	30	36	36	235	24,8	213	155	160	0,169
20	x	30	36	36	248	24,8	202	155	160	0,162
22	x	38	41	46	349	31,7	197	134	250	0,338
24	x	38	41	46	381	31,7	181	134	250	0,315
25	x	38	41	46	397	31,7	174	134	250	0,304

To continue see next page

## RINGFEDER® Locking Assemblies with central lock nut

**RfN 7085**

corrosion protected

Locking Assembly dimensions					Wrench size SW	Transmissible torques or axial forces T	$F_{ax}$	Surface pressure		Locking nut $T_A$	Gw
d	x	D	L	$l_3$				Shaft PW	Hub PN		
mm			mm	mm	mm	Nm	kN			Nm	kg
28	x	42	44	23	50	565	40,3	174	134	355	0,37
30	x	42	44	23	50	605	40,3	163	134	355	0,345
32	x	50	51	28	55	764	47,7	166	112	490	0,552
35	x	50	51	28	55	836	47,7	152	112	490	0,495
38	x	58	58	32	65	1140	60,2	155	116	700	0,851
40	x	58	58	32	65	1200	60,2	147	116	700	0,801
42	x	60	63	37	65	1250	59,6	120	94	740	0,841
45	x	60	63	37	65	1340	59,6	112	94	740	0,741

## Ordering example: RfN 7085

Type	d	D
RfN 7085	24	38

## Technical Information

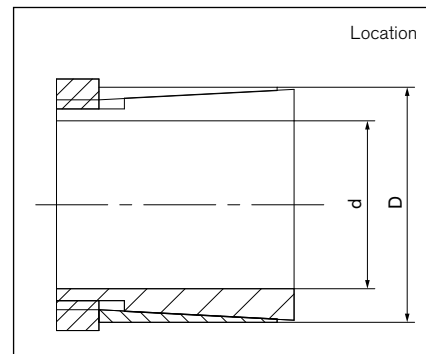
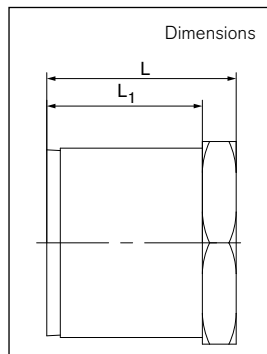
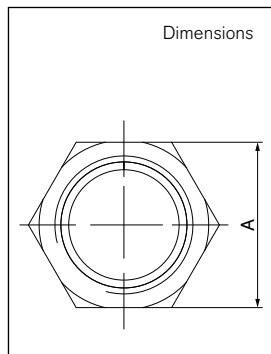
- Surface finishes: Shaft and hub bores  $R_a \leq 1,6 \mu\text{m}$
- Tolerances: Shaft: h8 · Hub: H8

Subject to technical change.

RINGFEDER® Locking Assemblies with central lock nut

# RfN 7090

stainless



Basic dimensions when screws are not tightened

**d** = Inner diameter  
**D** = Outer diameter  
**L** = Overall width

**L<sub>1</sub>** = Installation length without Locking nut  
**SW** = Wrench size  
**T** = Transmissible torque at given T<sub>A</sub>

**T<sub>A</sub>** = Max. tightened torque of the screws  
**Gw** = Weight

Locking Assembly dimensions					Wrench size	Transmissible torques or axial forces	Locking nut	
d	x	D	L	L <sub>1</sub>	SW	T	T <sub>A</sub>	Gw
mm			mm			Nm	Nm	kg
4	x	8	15	12,5	8	3	4	0,004
5	x	10	15	12,5	10	4	5	0,007
6	x	10	15	12,5	10	7	8	0,006
6,35	x	10	15	12,5	10	7	8	0,005
7	x	12	15	12	12	8	9	0,006
8	x	14	22	19	17	14	15	0,017
9	x	14	22	19	17	14	15	0,015
9,52	x	14	22	19	17	14	15	0,013
10	x	17	22	18,5	19	18	19	0,029
11	x	17	22	18,5	19	18	19	0,028
12	x	17	22	18,5	19	18	19	0,026
14	x	20	28	23	22	24	25	0,035
15	x	20	28	23	22	24	25	0,036
15,88	x	23	28	23	27	26	27	0,048
16	x	23	28	23	27	26	27	0,05
17	x	23	28	23	27	26	27	0,045
19	x	25	28	23	27	29	30	0,047
20	x	28	28	23	30	31	32	0,067

Ordering example: RfN 7090

Type	d	D
RfN 7090	16	23

Technical Information

- Surface finishes: Shaft and hub bores R<sub>a</sub> ≤ 1,6 μm
- Tolerances: Shaft: h8 · Hub: H8

Subject to technical change.