

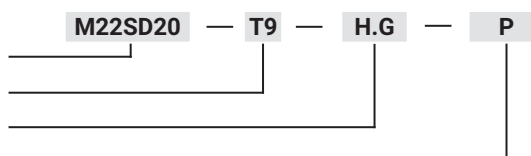
Cut out

Compression lock with a stroke of approx. 6mm.
 The drawing shows the right-hand version of the lock.
 The left-hand version is a mirror reflection of the right.

TYPE OF LOCK	INSERTS [D]			COMPONENTS	MATERIAL
M22SD20SN				Housing, Insert, Cam	Stainless steel
	RAILWAY	KW8	T9		

How to order:

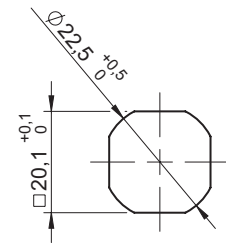
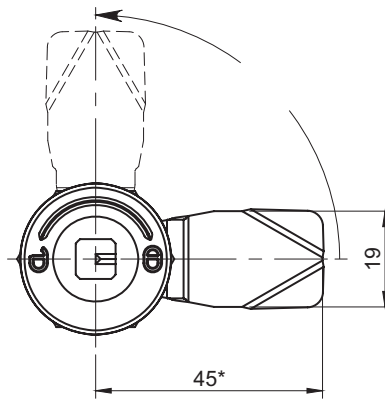
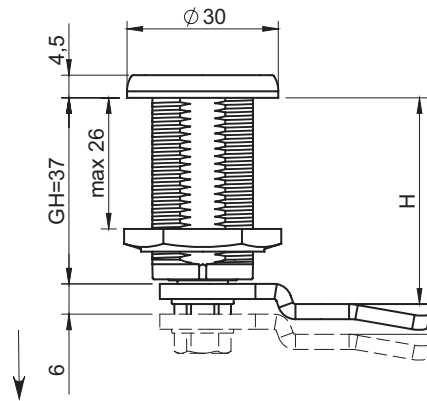
- Type of lock
- Type of insert [D]
- Locking height
- Version (L-left, P-right)



where:

- H - locking height
- G - cam group

Lock M22SD20SN is fitted with cams from the group: 16 (page 1C-12)



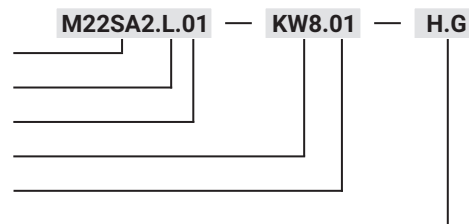
Cut out

Lock in version for the left door. The right door version is a mirror reflection.

TYPE OF LOCK	COMPONENTS	MATERIAL
M22SA2	Housing, Knob	ZAMAK5
	Cam, Washer, Nut Internal mechanism	Steel zinc plated
INSERTS [X]		FINISH [C]
		Chrome
KW8	T8	RAL9005
		01
		04

How to order:

- Type of lock
- Type of lock (L-Left, R-Right)
- Housing finish [C]
- Type of insert [X]
- Insert finish [C]
- Locking height

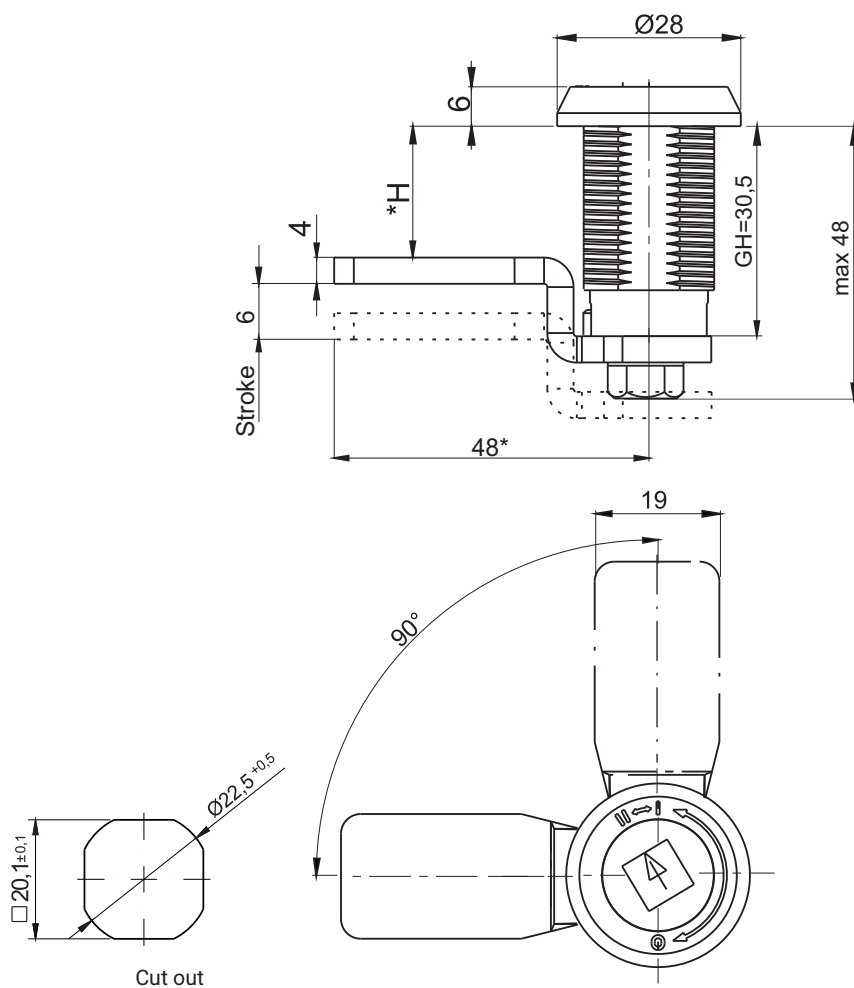


where:

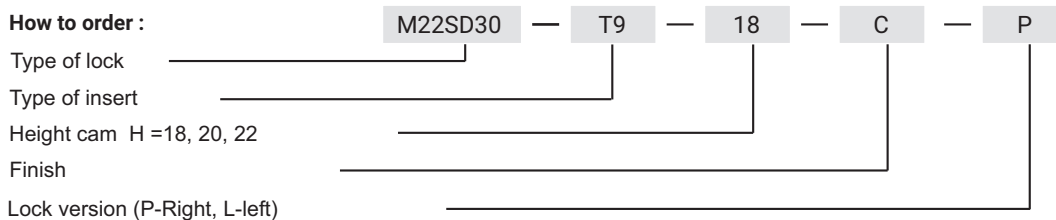
- H - the cam unbending dimension
- G - cam group

Lock M22SA2 is compatible with all cams from range:15, 16, 19, 35, 36 (page 1C-12 - 1C-19)

LH/RH

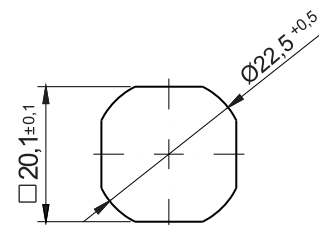
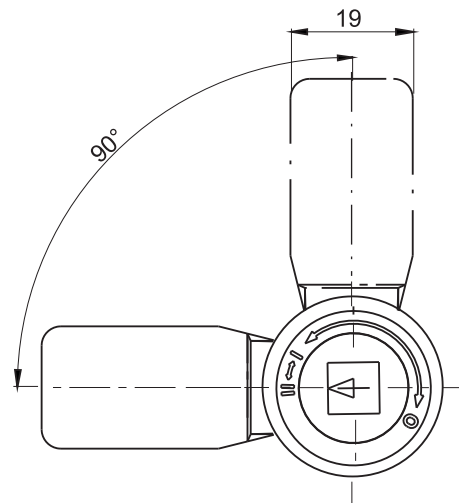
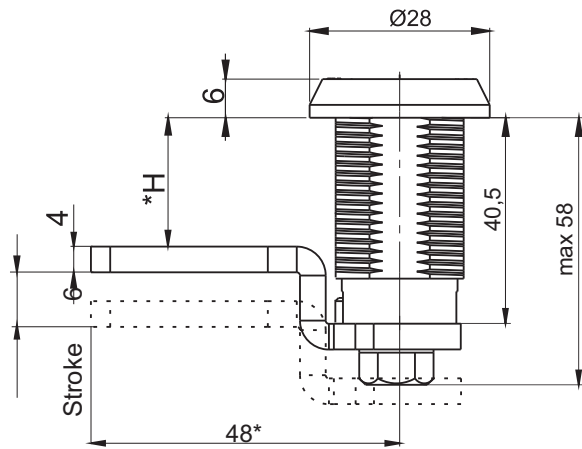


Insert					Finish [C]	
					Chrome	
T9	KW 8	S	N	RAILWAY	01	
TYPE OF LOCK			COMPONENTS		MATERIAL	
M22SD30			Housing, Insert		ZAMAK5	
			Cam		Steel zinc plated	
M22SD30-SN			Housing, Insert, Cam		Stainless steel	



* possibility to make in another dimension
 Lock M22SD30 addition to being locked, has shaped the possibility of additional security padlock.

stainless steel LH/RH



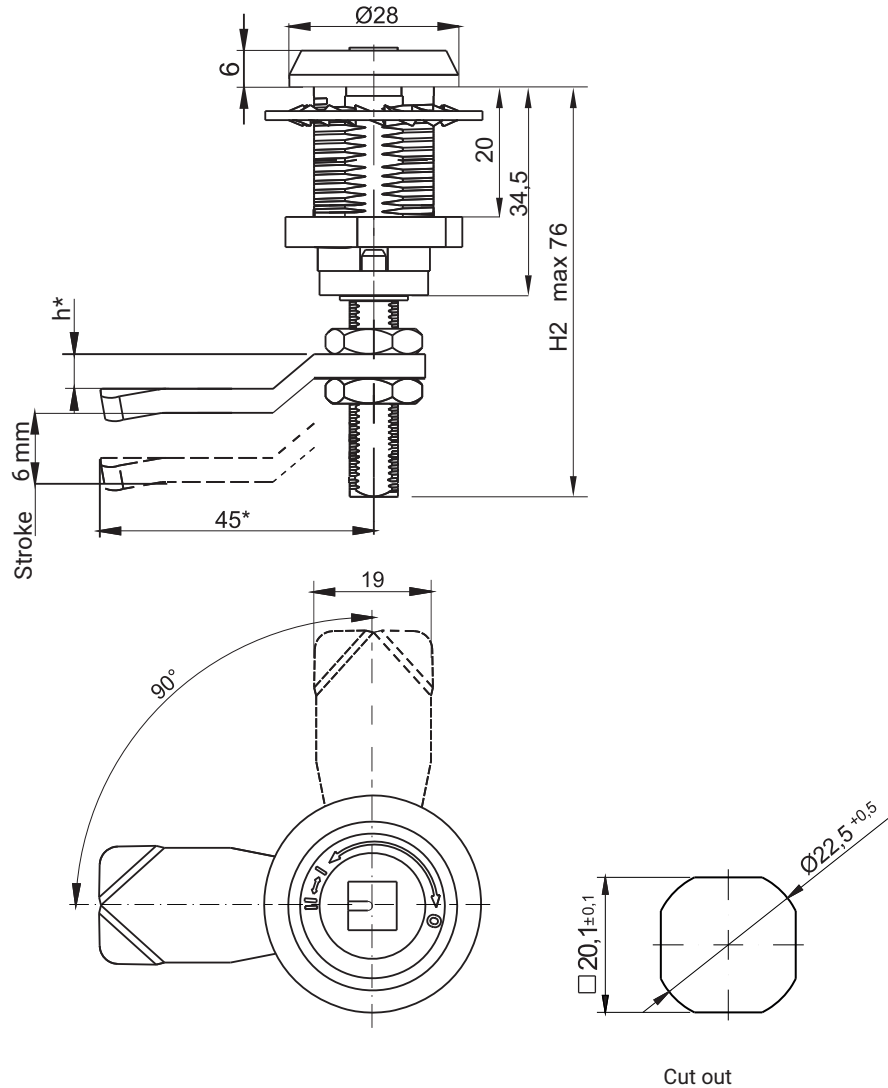
Cut out

Insert				
T9	KW 8	S	N	RAILWAY
TYPE OF LOCK		COMPONENTS	MATERIAL	
M22SD40		Housing, insert	Stainless steel	
		Cam		



* possibility to make in another dimension
 Lock M22SD40 addition to being locked, has shaped the possibility of additional security padlock.

stainless steel LH/RH



Cut out

Insert					Finish [C]
					Chrome
T9	KW 8	S	N	RAILWAY	01

TYPE OF LOCK	COMPONENTS	MATERIAL
M22SC	Housing, insert	ZAMAK5
	Cam	Steel zinc plated
M22SC SN	Housing, insert	Stainless steel
	Cam	

How to order :

M22SC — T9 — 3 — C — P

Type of lock _____

Type of insert _____

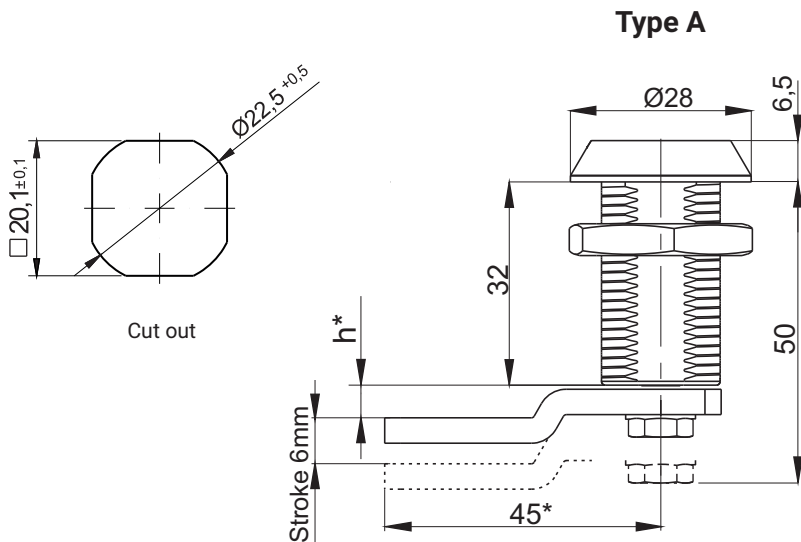
Height cam h = 0, 3, 6, 9, -3, -6, -9 _____

Finish _____

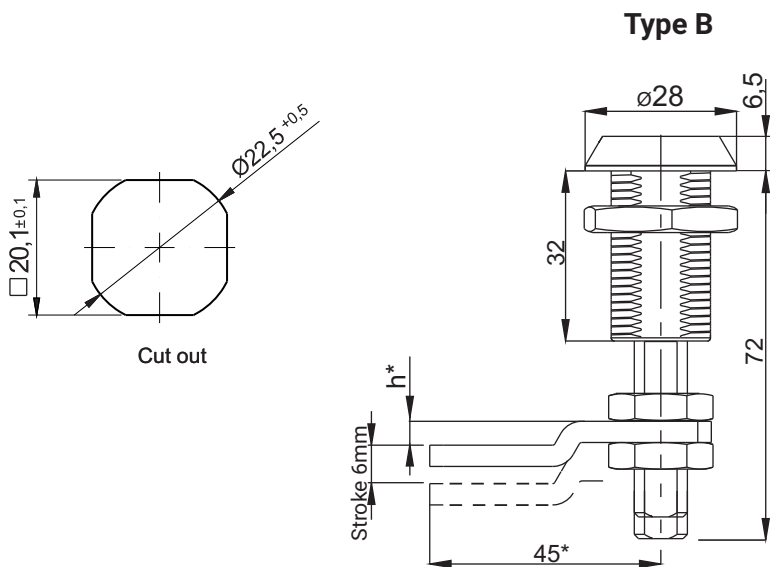
Lock version (P-right, L-left) _____

* possibility to make in another dimension
 Lock M22SC addition to being locked, has shaped the possibility of additional security padlock.

IP65 LH/RH



IP65 LH/RH



INSERT						FINISH [C]	
						Chrome	RAL 9005
D3	D5	T7	T9	KW 7	KW 8	01	04
TYPE OF LOCK				COMPONENTS		MATERIAL	
M22SA				Housing, insert		ZAMAK5	
				Cam		Steel zinc plated	

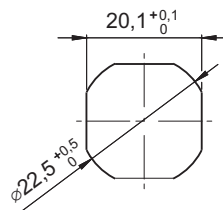
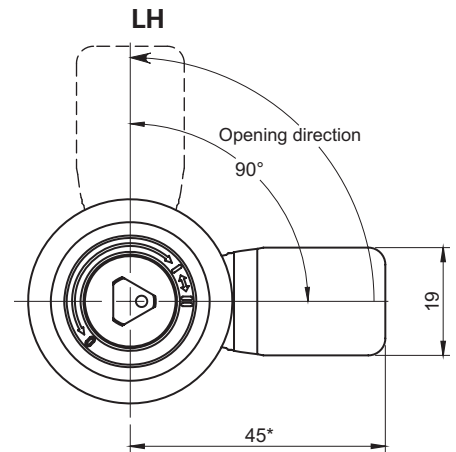
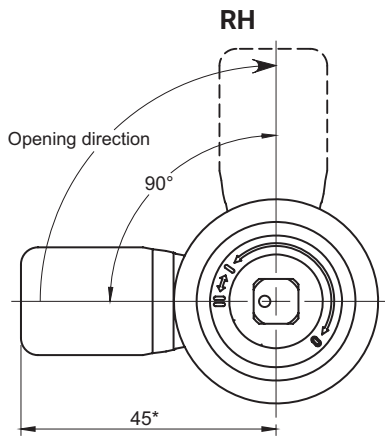
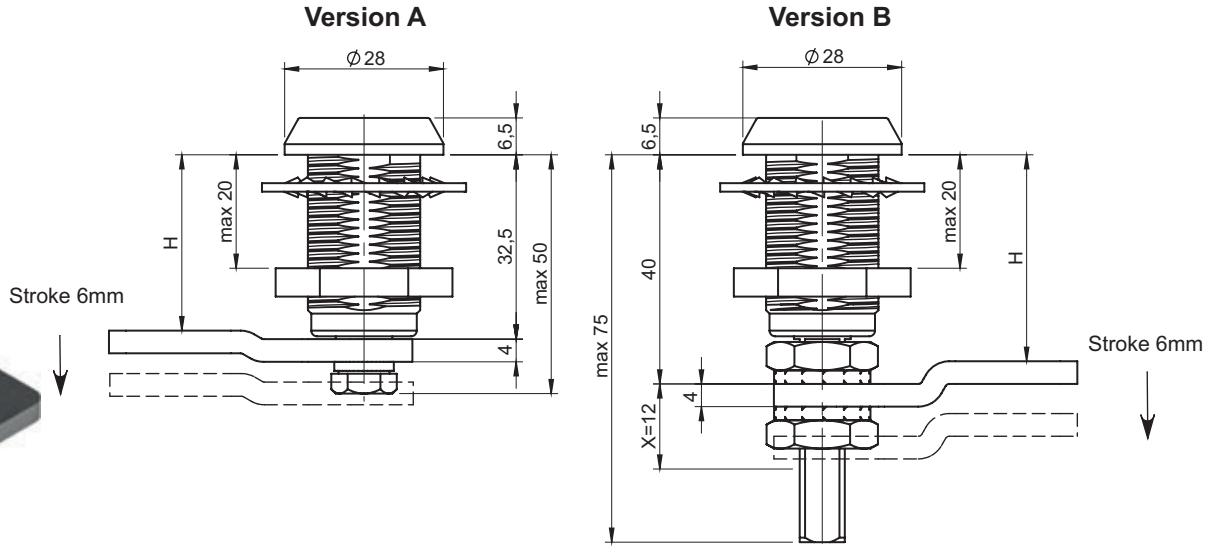


* possibility to make in another dimension

stainless steel

IP65

LH/RH



Cut out

TYPE OF LOCK	COMPONENTS	MATERIAL	INSERT
M22SE SN	Housing, Insert Cam	Stainless steel	

How to order :

Type of lock

Type of insert

Version A, B; (left - LH, right - RH)

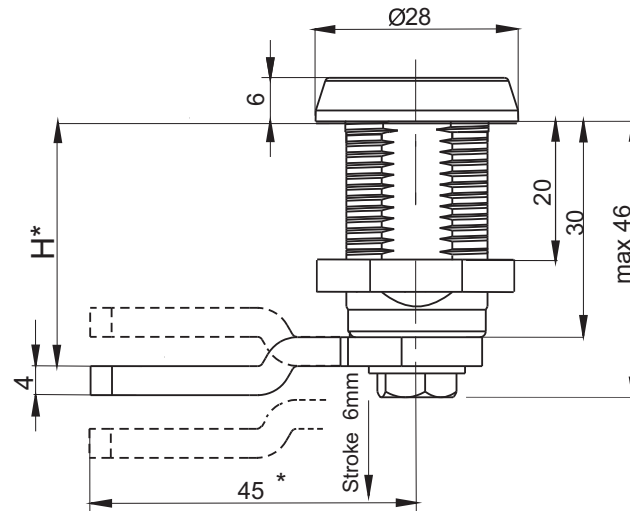
Hight cam

- for version A H=27,5; 32,5; 37,5

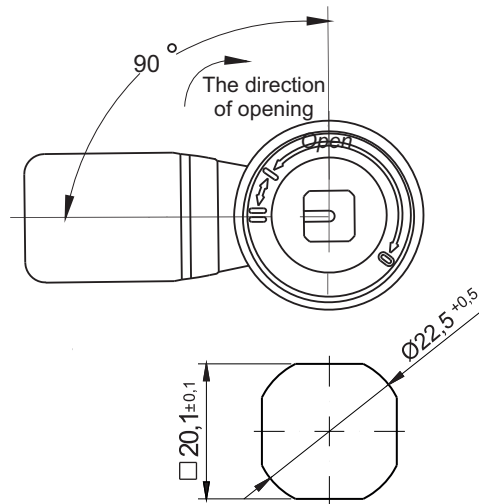
- for version B H=35; 40; 45

M22SE — T9 — AL — 32,5

* possibility to make in different dimension



LH/RH

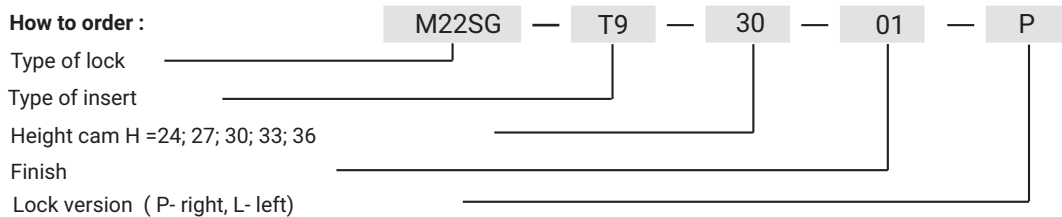


Cut out

INSERT		FINISH [C]	
		Chrom	RAL 9005
T9	KW8	01	04

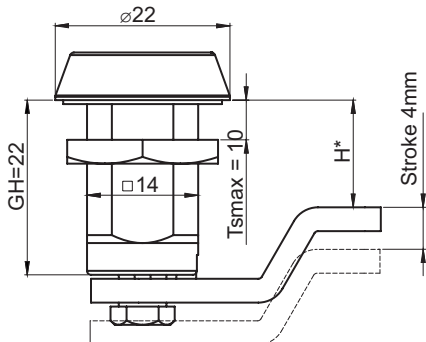
TYPE OF LOCK	COMPONENTS	MATERIAL
M22SG	Housing, insert	ZAMAK 5
	Cam	Steel zinc plated

How to order :

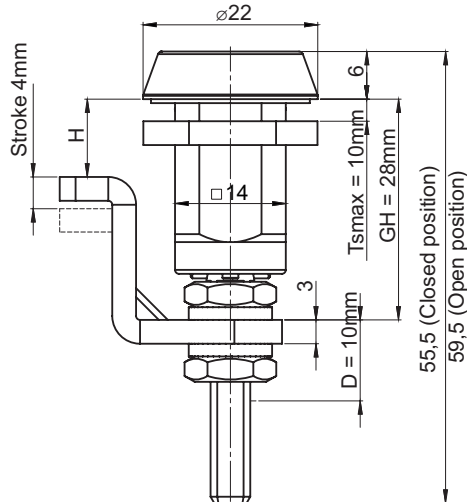


* possibility to make in another dimension

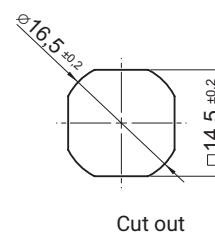
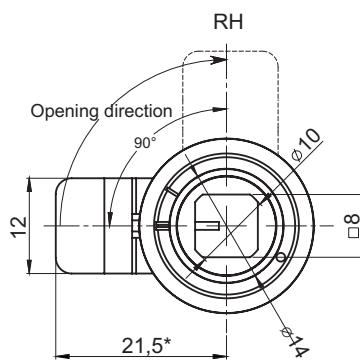
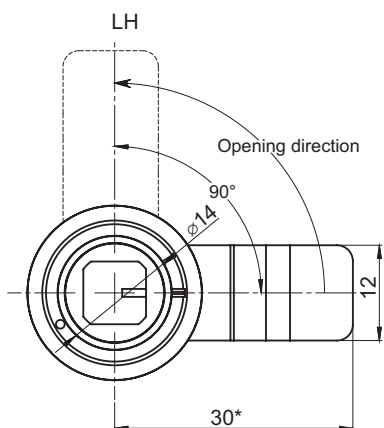
Version A



Version B



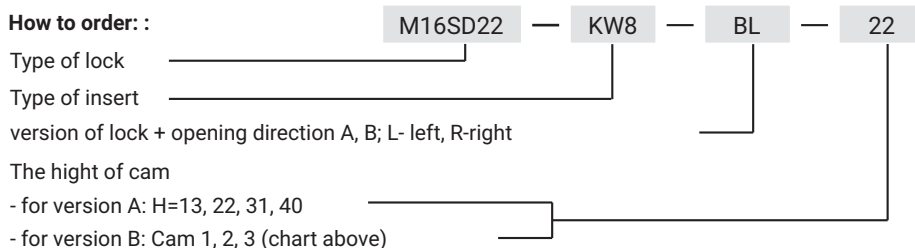
stainless steel	IP65	LH/RH
-----------------	------	-------



Height adjustment H cam for lock in version B		
Cam	H	
1 Bended 18mm	10 - 20	
	46 - 56	
2 Bended 9mm	19 - 29	
	37 - 47	
3 Straight	28 - 38	

The lock has IP65.
 The lock has double pressure.
 The lock is fitted with the key 2.KLKW8.001 (str. 2A-112 - 2A-113).
D - the range of latch adjustment M16SD22 type B.
Ts - the thickness of sheet steel.
 In lockM16SD22 type B bended can be fitted double sided.

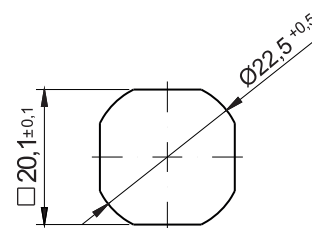
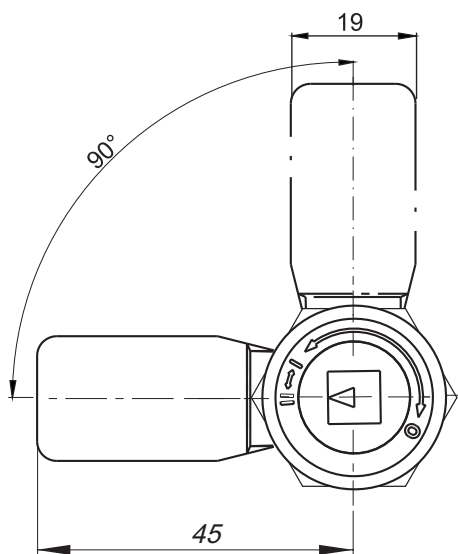
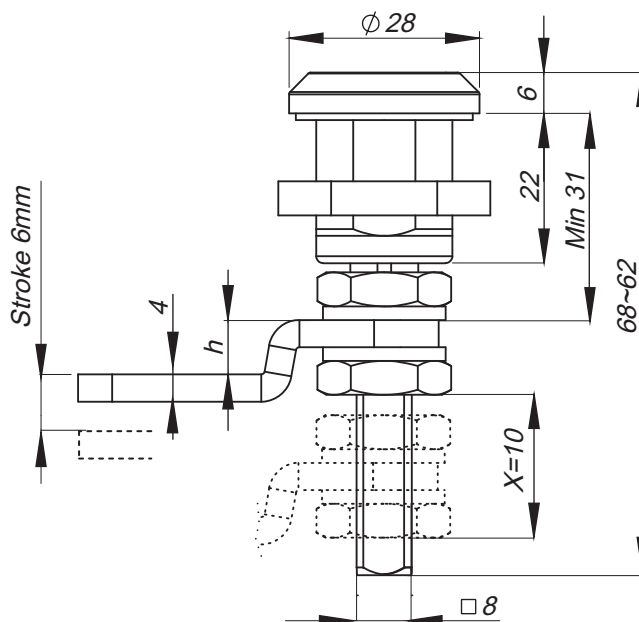
TYPE OF LOCK	ELEMENTY SKŁADOWE	MATERIAL
M16SD22	Housing, Insert, Cam	Stainless steel



Inserts	
T9	KW 8

stainless steel

IP65



Mounting hole

Lock has IP65
The lock has two sided clamp.
The x value means the range of adjusting the bar.

Inserts



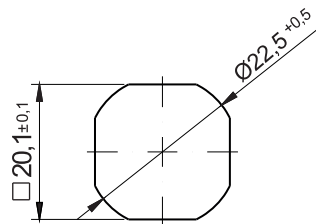
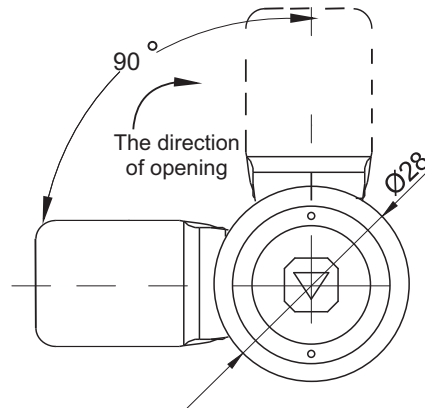
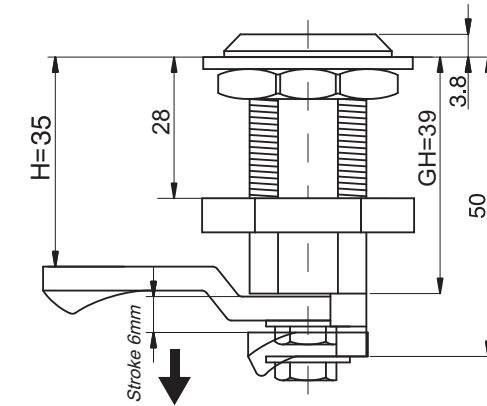
T9

KW 8

TYPE OF LOCK	COMPONENTS	MATERIAL
M22SD22	Housing, insert	Stainless steel 304
	Cam	Stainless steel 304

How to order:





Cut out

Insert



KW 8

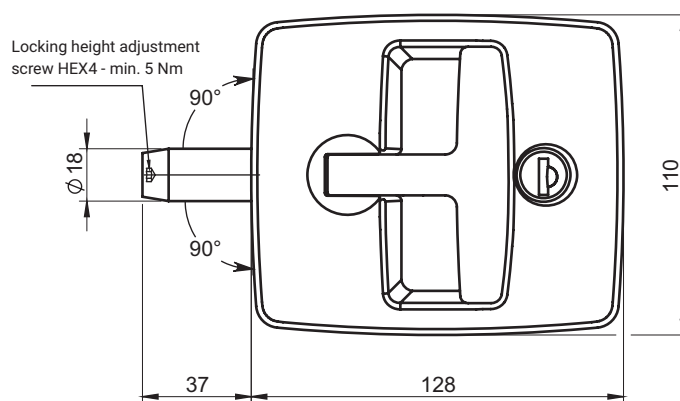
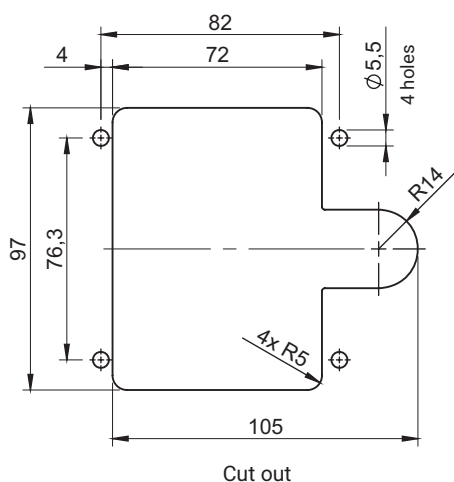
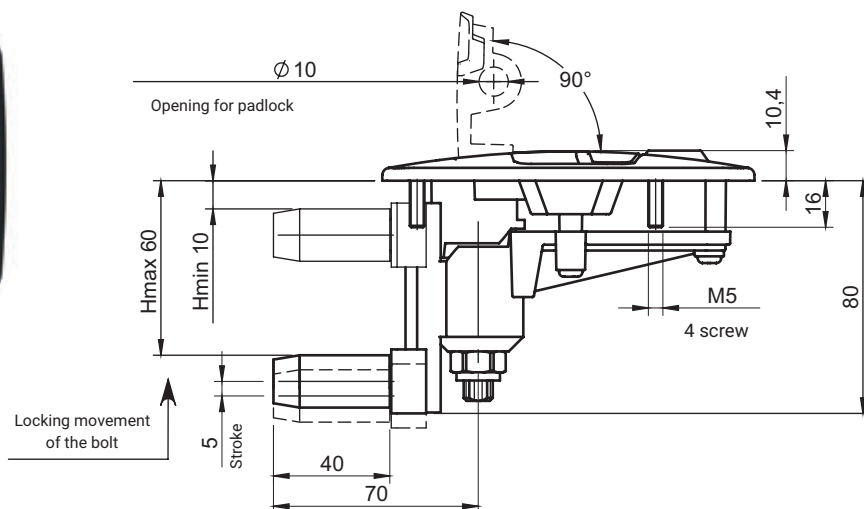
TYPE OF LOCK	COMPONENTS	MATERIAL
2.530.001	Housing, insert	Stainless steel
	Cam	Stainless steel

* possibility to make in another dimension

How to order:

Type of lock
Type of insert

2.530.001 — KW8



Sealing of lockable doors by folding the lock handle into the lock body.
 The locking height (dimension H) is adjustable from 10 to 60 mm.
 Locking height is adjusted when the lock is installed and locked with the HEX 4 key
 - Recommended tightening torque for the adjusting screw: 5 Nm.

TYPE OF LOCK	COMPONENTS	MATERIAL	FINISH [C]		CYLINDER PROFILE	
			RAL9005	RAL7035	Key code	
2.516.001	Housing, Lever Roller	Polyamide PA6 GF	07	-	Different code RK	1333
	Handle	ZAMAK	04	05		
	Bolt, Lever Bushing	ZAMAK	-	-		

How to order:

Catalogue no.

Key code

Housing finish

Handle finish

* other colours on request

