



## Hose connection sets

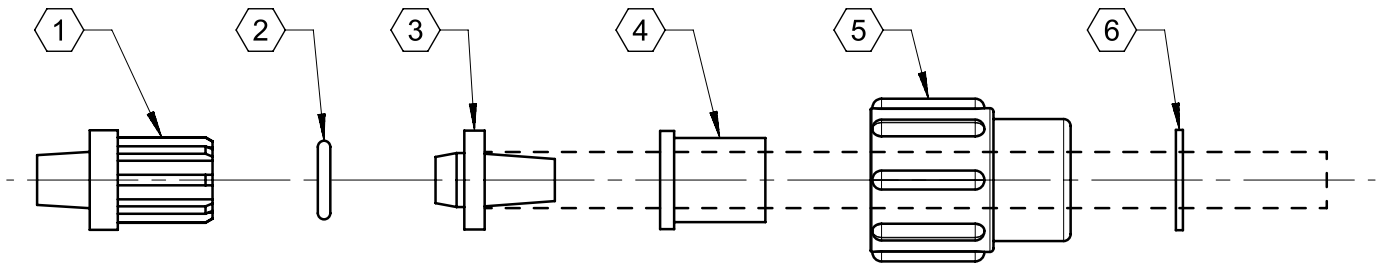
The connection set provides variability for different hose diameters. Various seals are included with the set.

### Product characteristics

- Set includes various diameters from  $\varnothing 4 \times 6 \text{mm}$  to  $\varnothing 6 \times 12 \text{mm}$
- FKM, EPDM and PTFE seals

Technical drawing

IMAGE 1/1



① collet - PP

② o-ring - EPDM black, PTFE white, FKM green

③ cone for tube connection - PVDF  
- inside  $\varnothing$  3  
- inside  $\varnothing$  4

④ shell for tube connection - PP  
- inside  $\varnothing$  8  
- inside  $\varnothing$  9  
- inside  $\varnothing$  10

⑤ screw  $\frac{5}{8}$  - 18 UNF - PP

⑥ clamping ring - 1.4571

Product options

IMAGE 1/1

**ORDERING KEY**

35207010	Hose connection sets
	$\varnothing$ 4x6mm, $\varnothing$ 5x8mm, $\varnothing$ 5x9mm, $\varnothing$ 6x8mm, $\varnothing$ 6x9mm, $\varnothing$ 6x10mm, $\varnothing$ 6x12 mm with FKM, EPDM, PTFE seals

#### Article characteristics

<b>Attribute</b>	<b>35207010</b>
<b>Suitable for</b>	Sauglanze mit Gewindeabgang
<b>Material</b>	PP/PVDF
<b>Sealing material</b>	FKM/EPDM/PFE
<b>Hose diameter</b>	Ø4x6mm, Ø5x8mm, Ø5x9mm, Ø6x8mm, Ø6x9mm, Ø6x10mm, Ø6x12mm