

## Anti-tamper mounting screws 35104

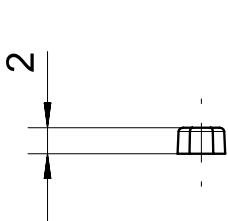
### Product characteristics

- Prevents easy removal of safety sensors and actuators

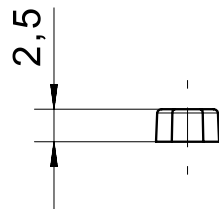
### Technical drawing

IMAGE 1/1

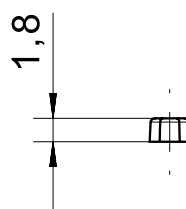
351040



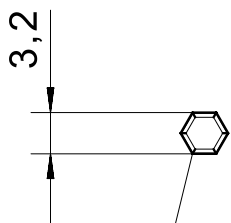
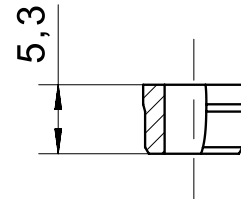
351041



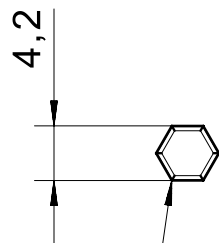
351042



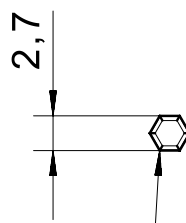
351045



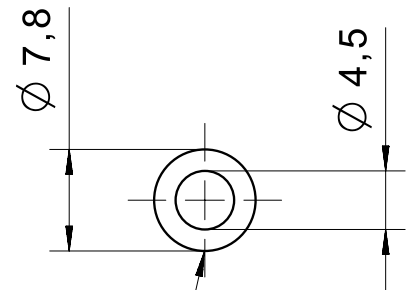
Pa6



Pa6



Pa6



PBT

**Product options**

IMAGE 1/1

**ORDERING KEY**

<b>351</b>		<b>Anti-tamper mounting screws</b>
	<b>040</b>	<b>Cylinder screws M4</b>
	<b>041</b>	<b>Cylinder screws M5</b>
	<b>042</b>	<b>Countersunk screws M4</b>
	<b>045</b>	<b>Mounting sleeve</b>