



CAPTRON



HQ / Sales Germany
CAPTRON Electronic GmbH

Johann-G.-Gutenberg-Str. 7
D - 82140 Olching
Fon: +49 8142 - 44 88 - 160
sales@captron.com

www.captron.de

**HMI pushbuttons for
the Food Industry**

Perfect balance between flexibility, performance and hygienic design.

Developed to meet the stringent requirements of the food industry, our HMI sensor buttons are fully moulded at the front and back and therefore 100% waterproof, hygienic and fail-safe.

With our EHEDG-certified products we ensure that your production processes meet the highest quality and safety standards.

In addition to our standardised range of products for the food sector you can customise all products to your requirements, for even greater flexibility and personalisation.



Durable & robust

No mechanical components, no wear and tear



100% waterproof

Fully encapsulated electronics prevent the ingress of liquid, dust or vapour



Resistant to cleaning agents

Hygienic and hygiene-certified products with housing made of high-quality stainless steel



Flexible in use

Customisable thanks to integrated IO-Link interface



EHEDG certified

Meets the highest quality and safety standards

Request a consultation now
sales@captron.com
+49 8142 - 44 88 - 160



CANEO

Original Operating Instructions



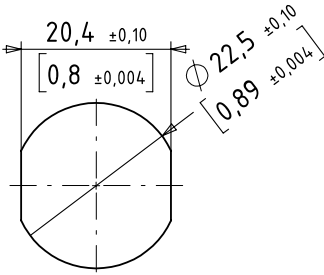
series10 Hygiene



Technical specifications

series10	
Operating voltage	— — — DC 24 V (8.4 to 32 V)
Load current	max. 200 mA
Output	Adjustable PNP / NPN; NO / NC
Length of output pulse	Adjustable
Reverse polarity protection	Protection of all cables/lines
Short circuit protection	Protected against short circuit and overload
Voltage drop	Max. 5 V at 200 mA load current
Power consumption at 24 V	Max. 40 mA
Operating temperature	-30°C (-22°F) to 65°C (149°F)
Degree of protection IP	Front side IP6K9K maximum unevenness in mounting surface < 0.1 mm
Degree of protection IK	IK08
Communication interface	IO-Link specification V1.1
Control voltage E1/E2	on 80%U _{V+} off 0 to 20% U _{V+}
Measuring principle	Capacitive
Type of actuation	Touch
Actuation force	No actuation force required
max. altitude	2000 m above sea level with "CSA" listing"
Relative air humidity	Max. 95%, non-condensing

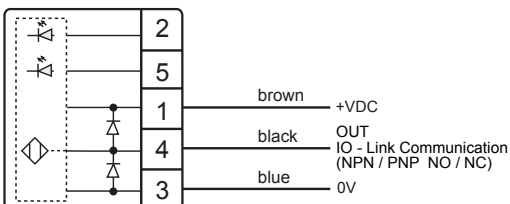
Drilling pattern



The SENSORswitch is secured against rotation by the illustrated hole. Metric and imperial measurements are used in drawings. Imperial measurements are marked with [].

Connection plan

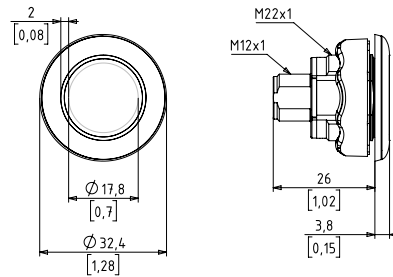
3-pin



The product description will indicate the configuration.

Product description

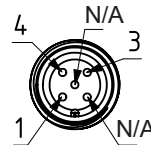
Dimensional drawing



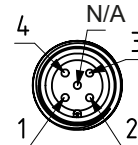
Metric and imperial measurements are used in drawings. Imperial measurements are marked with [].

Connection options

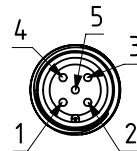
Plug M12, 3-pin



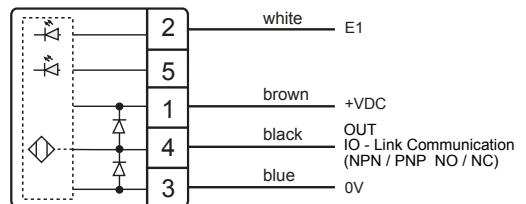
Plug M12, 4-pin



Plug M12, 5-pin

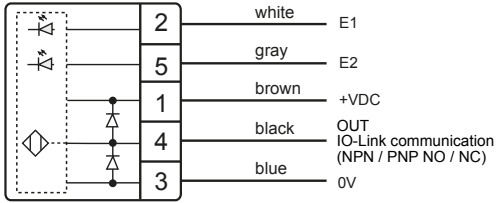


4-pin



The product description will indicate the configuration.

5-pin



The product description will indicate the configuration.

Safety

General safety

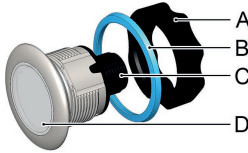
All work on electrical systems or operating equipment may only be carried out by a specially qualified electrician according to the applicable electrotechnical regulations.

- Only connect the product to a limited energy source as per IEC 61010 or an NEC class 2 power supply unit.
- Source current < 4 A at maximum operating voltage.

Foreword

These operating instructions are intended for technicians/installers and operators and should be kept for future reference. Read these operating instructions carefully and make sure that you have fully understood the contents before installing or working with the SENSORswitches.

A	Lock nut
B	Seal
C	Connection M12
D	SENSORswitch



- ▶ Position the SENSORswitch (D) and tighten the lock nuts with max. 1.5 Nm.
- ▶ Connect the SENSORswitch (D) electrically to terminal (C) according to the connection plan.

Configure CANEO series10 with IO-Link

TIP

For information on hygienic assembly, maintenance and configuring the SENSORswitch, see our website series10.captron.com or scan the QR code.



Maintenance

Maintenance operations

Carry out the following maintenance operations at the specified intervals.

Disposal

Different types of electrical and electronic components must be recycled according to their type. All applicable statutory, state and local laws and regulations must be complied with.

Imprint

The operating instructions have been authored and published by

CAPTRON Electronic GmbH
 Johann-G.-Gutenberg-Straße 7
 82140 Olching – Germany
 Tel +49 (0) 8142 - 44 88 – 160
sales@captron.com
www.captron.com
 Copyright 2020
 CANEO series10 Hygiene 1.0

The safety of the system in which the SENSORswitch is integrated is the responsibility of the operator.

⚠ WARNING



Improper work on electrical systems!

- Electric shock can result in death or life-threatening injuries.
- ▶ Before working on electrical systems, disconnect them from their voltage supply and secure them against being switched on again.
 - ▶ Work on electrical installations should be carried out only by qualified personnel in compliance with local and national electrical regulations and specifications.

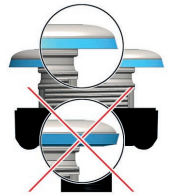
Intended use

The SENSORswitch is intended for use in accordance with the items listed here, the values from the “Technical specifications” chapter and the product description.

Series10 assembly

Requirements:

- Mounting surface is level and has been thoroughly cleaned (maximum unevenness in mounting surface 0.1 mm).
- The panel is between 1.0 mm and 9.5 mm thick.
- ▶ Disconnect the system from its voltage supply and secure it against being switched on again.
- ▶ Check the correct assembly of the seal (B) and correct it if necessary.
- ▶ Clean the seal before assembly.
- ▶ Insert the SENSORswitch (D) into the prepared hole and screw the lock nut (A) on.



Maintenance operation	as needed	annually
Clean the switch surface	X	
Check cables for intactness and firm fit		X
Check screw connections for tightness		X

NOTICE

Abrasive aids and solvents contained in cleaning agents can attack the plastic of the button!

- ▶ Clean the surface of the button with a neutral cleaning agent or a damp microfiber cloth.
- ▶ Do not use abrasive aids such as steel wool and steel brushes.

series10 disassembly with lock nut

- ▶ Disconnect the system from its voltage supply and secure it against being switched on again.
- ▶ Disconnect the electrical connection and remove the lock nuts.