

CERTIFIED HYGIENIC 3-A, USDA & EHEDG



CERTIFIED
HYGIENIC



MINIMIZED
CLEANING TIME



MINIMIZED
WATER USAGE

THE ONLY LEVELLING FEET IN THE WORLD
HYGIENICALLY CERTIFIED BY **3-A, USDA & EHEDG STANDARDS**
FOR USE IN **SANITARY PRODUCTION** ENVIRONMENTS

SELF-DRAINING SURFACES, SEALED MOVABLE PARTS AND
NO EXPOSED THREAD SECURES **ABSOLUTE MINIMUM CLEANING**
AND **MAXIMUM SANITARY SAFETY**



3-A, USDA & EHEDG CERTIFIED HYGIENIC

All process industries are subject to increasing regulatory requirements, which increases the focus on resource consumption, product safety and official hygienic certifications.

The 3-A, USDA & EHEDG certified levelling feet reduce the water consumption and cleaning resources in addition to minimizing the risk of contamination in the production.

Choosing NGI's certified levelling feet will hygienically enhance your machinery and your customer's Return-On-Investment (ROI).



Product Group Features

- EHEDG certification "TYPE EL – 1st CLASS" and 3-A certification "88-00"
- USDA certification "Dairy" and "NSF/ANIS/3-A 14159-1-2014"
- Official hygienic CERTIFIEDs included in every shipment
- Self-draining surfaces and safety against exposed thread secures absolute minimum cleaning
- Low-friction washer between spindle and footplate ensures easy adjustment
- All movable parts are 100% hygienically sealed even if the load on the foot is removed
- Vulcanized FDA-approved, anti-vibration, anti-slip rubber blocks out bacteria underneath the footplate
- Stainless steel AISI 304/A2, 1.4301. Optional AISI 316/A4, 1.4401
- More than 1.000 different variations available (weight load, height-adjustment, flexible mounting parts)
- All sealings are blue and therefore detectable by scanning systems
- Design and patent protected

XHS

Special Features

- Height variation 109 mm – 206 mm
- Weight load up to 70.000 N
- 3-A & EHEDG logo on footplate for certified recognition
- Thread covered with hygienic sleeve functioning as counter nut
- Optional top cover
- Optional fixing to the floor including hygienic washer



44

XHF

Special Features

- Height variation 99 mm – 337 mm
- Weight load up to 70.000 N
- 3-A & EHEDG logo on footplate for certified recognition
- 3-A, USDA & EHEDG certified
- Sealed low-friction thread (lubricated for life)
- Flexible mounting with optional flanges or thread adaptor
- No risk of over-adjusting the sleeve and thereby exposing thread
- Optional fixing to the floor including hygienic washer



54

XHTS

Special Features

- Height variation 109 mm – 206 mm
- Weight load up to 70.000 N
- The footplate and spindle are two separate parts
- Diametrically centered elevation on the footplate
- 3-A & EHEDG logo on footplate for certified recognition
- Thread covered with hygienic sleeve functioning as counter nut
- Optional top cover



48

XHFT

Special Features

- Height variation 99 mm – 337 mm
- Weight load up to 70.000 N
- The footplate and spindle are two separate parts
- Diametrically centered elevation on the footplate
- 3-A & EHEDG logo on footplate for certified recognition
- 3-A, USDA & EHEDG certified
- Sealed low-friction thread (lubricated for life)
- Flexible mounting with optional flanges or thread adaptor



58

XHGS + XHJS

Special Features

- Height variation 101 mm – 197 mm
- Weight load up to 110.000 N due to solid footplate
- 3-A logo on footplate for certified recognition
- Thread covered with hygienic sleeve functioning as counter nut
- Optional top cover
- Optional fixing to the floor including hygienic washers



52

XHFG + XHFJ

Special Features

- Height variation 91 mm – 325 mm
- Weight load up to 95.500 N due to solid footplate
- 3-A logo on footplate for certified recognition
- USDA certified
- Sealed low-friction thread (lubricated for life)
- Flexible mounting with optional flanges or thread adaptor
- Optional fixing to the floor including hygienic washers



60

ACCESSORIES

3-A, USDA & EHEDG

NGI is able to deliver all necessary accessories, which ensures a quick and easy installation of the levelling foot. In addition to supplying standardized accessories we are also able to supply customized accessories.

It is important to follow these instructions in order to ensure the certified hygienic design and functionality.

INSTRUCTIONS



It is important to follow these instructions in order to ensure the certified hygienic design and functionality. This documentation is enclosed with the levelling feet and should always be handed over to the enduser.

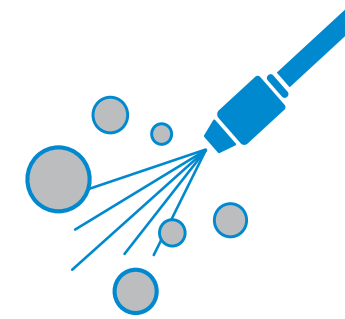
TOP COVER



- Top cover with blue sealing detectable by scanning systems
- Ensures hygienic covering of the exposed top thread
- Minimum cleaning effort due to the self-draining design
- Available in standardized and customized dimensions

64

CLEANING & MAINTENANCE



This cleaning and maintenance manual describes how to clean and maintain the levelling foot once installed.

72

FLANGES AND ADAPTOR



- Add-on for the XHF system
- Adaptor converts the size and type of the thread and extends the sleeve. It has blue sealings detectable by scanning systems.
- Flanges are squared or round and installed by bolting or welding. They are available in a large variety of sizes.

66

INSTALLATION MANUAL



This installation manual describes how to install the levelling foot onto the machine or equipment for which it is intended to support.

73

DOME-HEADED NUTS



- Stainless steel AISI 304/A2, 1.4301
- Standard dome-headed nuts DIN 1587 A2
- All dimensions available

70

DECLARATION OF CONFORMITY



This declaration of conformity lists all the directives and standards that NGI adheres to. This ensures that products from NGI are always in compliance with currently valid requirements.

76

CERTIFIED HYGIENIC XHS

-  CERTIFIED HYGIENIC
-  MINIMIZED CLEANING TIME
-  MINIMIZED WATER USAGE

The design and patent protected XHS levelling foot is the optimal choice for machinery and equipment that has to comply with the strictest hygienic requirements.

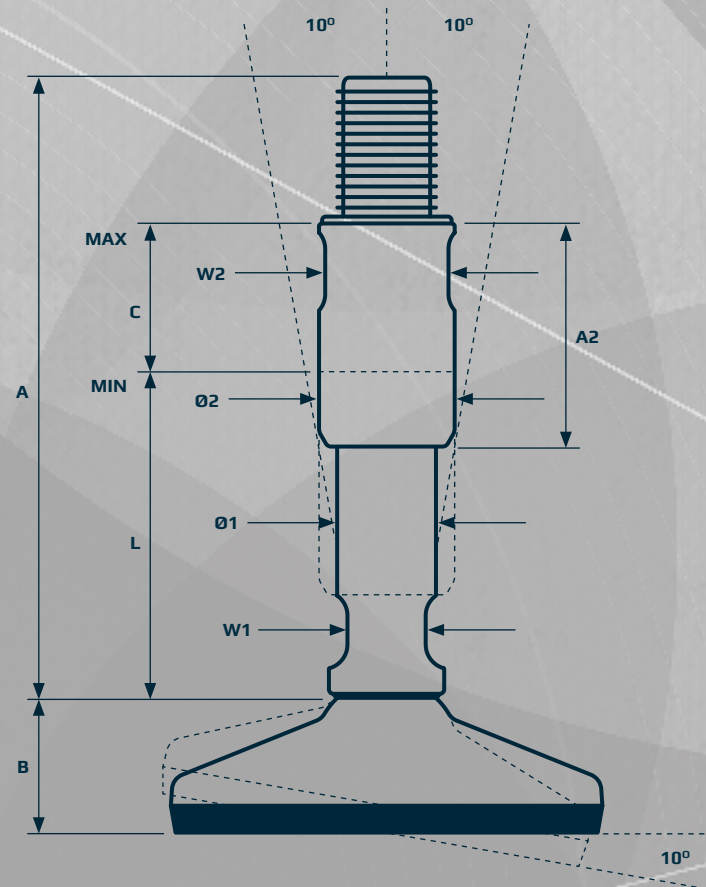
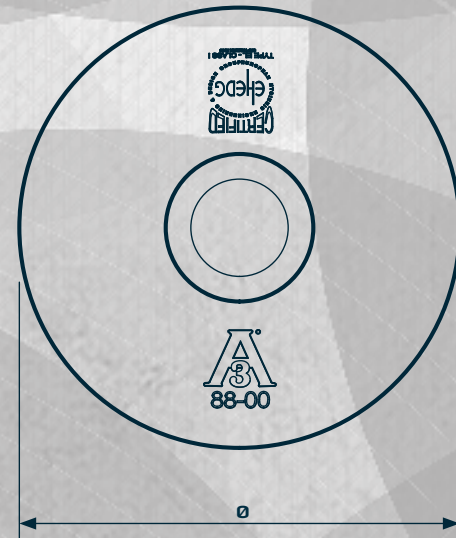
The thread is covered with a hygienic sleeve, which cannot be overadjusted and secures safety against exposed thread. The sleeve also functions as counter nut.

All movable parts are 100% hygienically sealed even if the load on the foot is removed. All sealings are blue and therefore detectable by scanning systems.

Minimum cleaning effort is obtained by the design of the self-draining surfaces. Additionally, the foot is hygienically sealed to the floor by vulcanized FDA-approved, anti-vibration, anti-slip rubber, which blocks out bacteria underneath the footplate.

Included in every shipment

- Official 3-A, USDA and EHEDG hygienic CERTIFIEDs
- Installation instructions
- Cleaning & maintenance instructions



CERTIFIED HYGIENIC LEVELLING FEET XHS



PRODUCT CODE	FOOT - SPINDLE - SLEEVE
EXAMPLE	XH065 - XHS16150 - RHOXS1655



FOOT PLATE

TYPE	DIAMETER Ø [mm]	HEIGHT B [mm]	NOM LOAD COMPRESSION [N]	ITEM CODE
65	65	28	9.000	XH065
80	80	33	15.000	XH080
105	105	33	22.000	XH080
125	125	34	32.000	XH125
150	150	34	65.000	XH150



SPINDLE

THREAD	HEIGHT A [mm]	MIN HEIGHT L [mm]	W1 [mm]	DIAMETER Ø1 [mm]	NOM LOAD COMPRESSION [N]	ITEM CODE
M16	155	80	13	16	30.800	XHS16155
M16	215	110	13	16	24.900	XHS16215
M20	155	80	15	20	48.200	XHS20155
M20	215	110	15	20	48.200	XHS20215
M24	155	80	19	24	69.200	XHS24155
M24	215	110	19	24	69.200	XHS24215
M30	155	80	24	30	110.200	XHS30155
M30	215	110	24	30	110.200	XHS30215
M36	155	80	27	32	160.200	XHS36155
M36	215	110	27	32	160.200	XHS36215



SLEEVE

THREAD	W2 [mm]	DIAMETER Ø2 [mm]	HEIGHT A2 [mm]	ADJUSTMENT C [mm]	ITEM CODE
M16	22	24,8	55	36	RHOXS1655
M16	22	24,8	85	66	RHOXS1685
M20	27	29,7	55	36	RHOXS2055
M20	27	29,7	85	66	RHOXS2085
M24	30	34,5	55	36	RHOXS2455
M24	30	34,5	85	66	RHOXS2485
M30	36	39,5	55	33	RHOXS3055
M30	36	39,5	85	63	RHOXS3085
M36	46	49,5	55	33	RHOXS3655
M36	46	49,5	85	63	RHOXS3685



- Total height = A + B
- Minimum usable height = B + L
- Maximum usable height = B + L + C
- Maximum nominal load = Lowest value for footplate or spindle
- Tolerance of total height = +/- 1,5 mm



CERTIFIED HYGIENIC XHS FIXING



The design and patent protected XHS Fixing levelling foot is the optimal choice for machinery and equipment that has to comply with the strictest hygienic requirements.

The XHS Fixing is designed to be fastened to the floor by the fixing plate. Hygienic washer according to 3-A, USDA & EHEDG specifications is included. Bolt and dome-headed nut can be supplied.

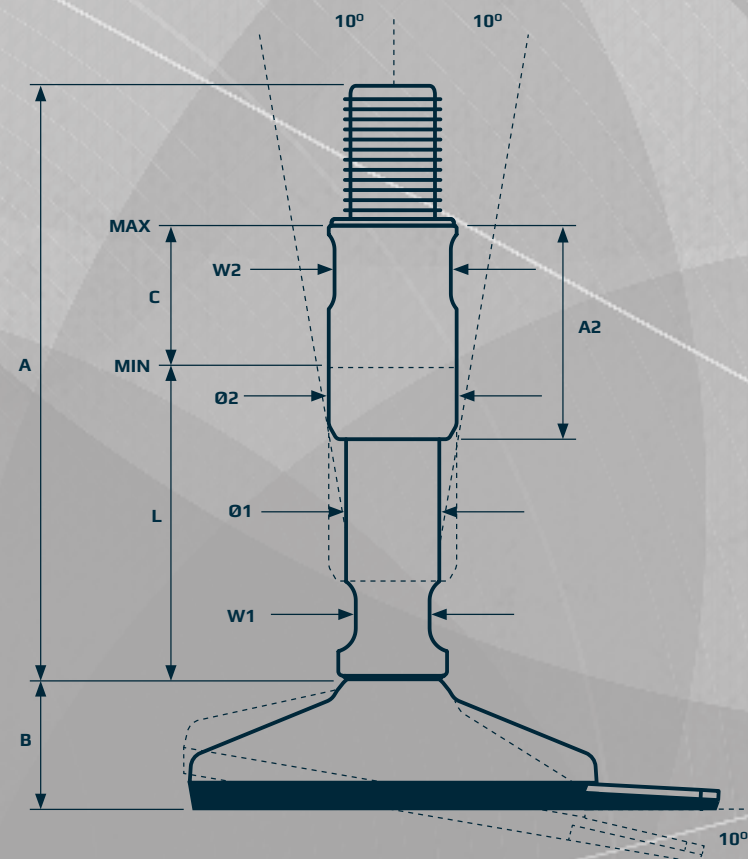
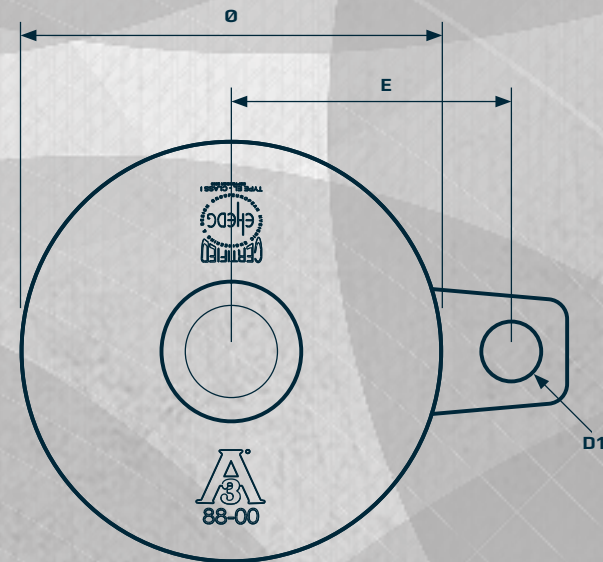
The thread is covered with a hygienic sleeve, which cannot be overadjusted and secures safety against exposed thread. The sleeve also functions as counter nut.

All movable parts are 100% hygienically sealed even if the load on the foot is removed. All sealings are blue and therefore detectable by scanning systems.

Minimum cleaning effort is obtained by the design of the self-draining surfaces. Additionally, the foot is hygienically sealed to the floor by vulcanized FDA-approved, anti-vibration, anti-slip rubber, which blocks out bacteria underneath the footplate.

Included in every shipment

- Official 3-A, USDA and EHEDG hygienic CERTIFIEDs
- Installation instructions
- Cleaning & maintenance instructions



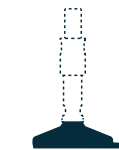
CERTIFIED HYGIENIC LEVELLING FEET XHS FIXING



PRODUCT CODE	FOOT - SPINDLE - SLEEVE
EXAMPLE	XH066 - XHS16150 - RHOXS1650



FOOT PLATE



TYPE	DIAMETER Ø [mm]	HEIGHT B [mm]	HOLE POSITION E [mm]	HOLE DIAMETER Ø1 [mm]	NOM LOAD COMPRESSION [N]	ITEM CODE
66	65	28	46,8	15	9.000	XH066
81	80	33	53,2	15	15.000	XH081
106	105	33	70,0	15	22.000	XH106

SPINDLE



THREAD	HEIGHT A [mm]	MIN HEIGHT L [mm]	W1 [mm]	DIAMETER Ø1 [mm]	NOM LOAD COMPRESSION [N]	ITEM CODE
M16	155	80	13	16	30.800	XHS16155
M16	215	110	13	16	24.900	XHS16215
M20	155	80	15	20	48.200	XHS20155
M20	215	110	15	20	48.200	XHS20215
M24	155	80	19	24	69.200	XHS24155
M24	215	110	19	24	69.200	XHS24215
M30	155	80	24	30	110.200	XHS30155
M30	215	110	24	30	110.200	XHS30215
M36	155	80	27	32	160.200	XHS36155
M36	215	110	27	32	160.200	XHS36215

SLEEVE



THREAD	W2 [mm]	DIAMETER Ø2 [mm]	HEIGHT A2 [mm]	ADJUSTMENT C [mm]	ITEM CODE
M16	22	24,8	55	36	RHOXS1650
M16	22	24,8	85	66	RHOXS1680
M20	27	29,7	55	36	RHOXS2050
M20	27	29,7	85	66	RHOXS2080
M24	30	34,5	55	36	RHOXS2450
M24	30	34,5	85	66	RHOXS2480
M30	36	39,5	55	33	RHOXS3050
M30	36	39,5	85	63	RHOXS3080
M36	46	49,5	55	33	RHOXS3650
M36	46	49,5	85	63	RHOXS3680



Total height = A + B
 Minimum usable height = B + L
 Maximum usable height = B + L + C
 Maximum nominal load = Lowest value for footplate or spindle
 Tolerance of total height = +/- 1,5 mm



CERTIFIED HYGIENIC XHTS

-  CERTIFIED HYGIENIC
-  MINIMIZED CLEANING TIME
-  MINIMIZED WATER USAGE

The design and patent protected XHTS levelling foot is the optimal choice for machinery and equipment that has to comply with the strictest hygienic requirements.

The XHTS consists of a separated footplate and spindle connected by the diametrically centered elevation on the footplate.

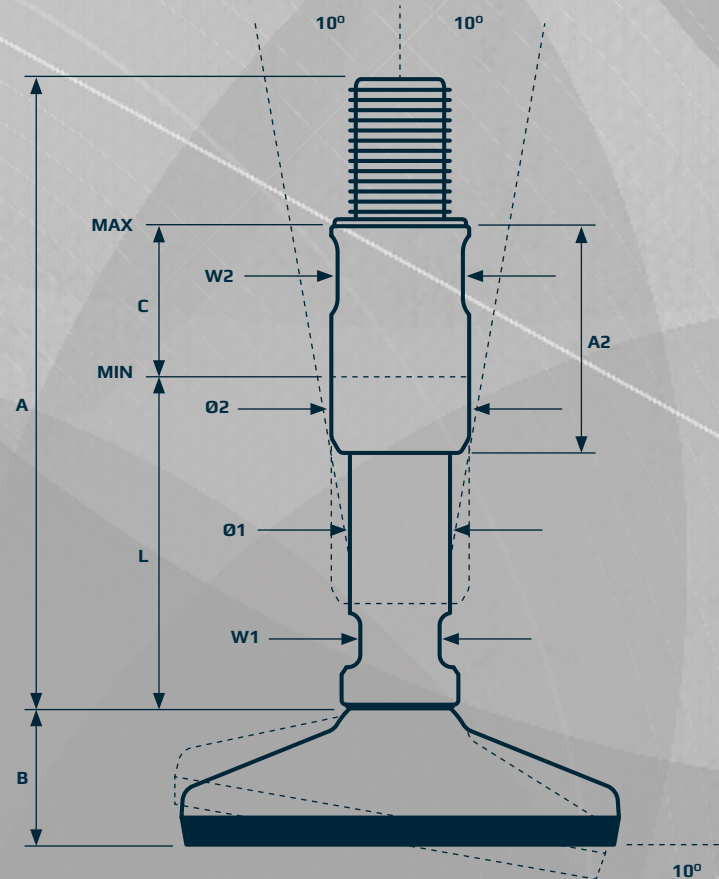
The thread is covered with a hygienic sleeve, which cannot be overadjusted and secures safety against exposed thread. The sleeve also functions as counter nut.

All movable parts are 100% hygienically sealed. All sealings are blue and therefore detectable by scanning systems.

Minimum cleaning effort is obtained by the design of the self-draining surfaces. Additionally, the foot is hygienically sealed to the floor by vulcanized FDA-approved, anti-vibration, anti-slip rubber, which blocks out bacteria underneath the footplate.

Included in every shipment

- Official 3-A, USDA and EHEDG hygienic CERTIFIEDs
- Installation instructions
- Cleaning & maintenance instructions



CERTIFIED HYGIENIC LEVELLING FEET XHTS



PRODUCT CODE	FOOT - SPINDLE - SLEEVE
EXAMPLE	XHT080-XHTS16150-RHOX1650



FOOT PLATE

TYPE	DIAMETER Ø [mm]	HEIGHT B [mm]	NOM LOAD COMPRESSION [N]	ITEM CODE
65	65	28	9.000	XHT065
80	80	33	15.000	XHT080
105	105	33	22.000	XHT105
125	125	34	32.000	XHT125
150	150	36	65.000	XHT150



SPINDLE

THREAD	HEIGHT A [mm]	MIN HEIGHT L [mm]	W1 [mm]	DIAMETER Ø2 [mm]	NOM LOAD [N]	ITEM CODE
M16	155	80	13	16	30.800	XHTS16155
M16	215	110	13	16	24.900	XHTS16215
M20	155	80	15	20	48.200	XHTS20155
M20	215	110	15	20	48.200	XHTS20215
M24	155	80	19	24	69.200	XHTS24155
M24	215	110	19	24	69.200	XHTS24215
M30	155	80	24	30	110.200	XHTS30155
M30	215	110	24	30	110.200	XHTS30215
M36	155	80	27	32	160.200	XHTS36155
M36	215	110	27	32	160.200	XHTS36215



SLEEVE

THREAD	W2 [mm]	DIAMETER Ø1 [mm]	HEIGHT A2 [mm]	ADJUSTMENT C [mm]	ITEM CODE
M16	22	24,8	55	36	RHOX51655
M16	22	24,8	85	66	RHOX51685
M20	27	29,7	55	36	RHOX52055
M20	27	29,7	85	66	RHOX52085
M24	30	34,5	55	36	RHOX52455
M24	30	34,5	85	66	RHOX52485
M30	36	39,5	55	33	RHOX53055
M30	36	39,5	85	63	RHOX53085
M36	46	49,5	55	33	RHOX53655
M36	46	49,5	85	63	RHOX53685



- Total height = A + B
- Minimum usable height = B + L
- Maximum usable height = B + L + C
- Maximum nominal load = Lowest value for footplate or spindle
- Tolerance of total height = +/- 1,5 mm



CERTIFIED HYGIENIC XHGS

-  CERTIFIED HYGIENIC
-  MINIMIZED CLEANING TIME
-  MINIMIZED WATER USAGE

The design and patent protected solid XHGS levelling foot is the optimal choice for heavy machinery and equipment that has to comply with the strictest hygienic requirements.

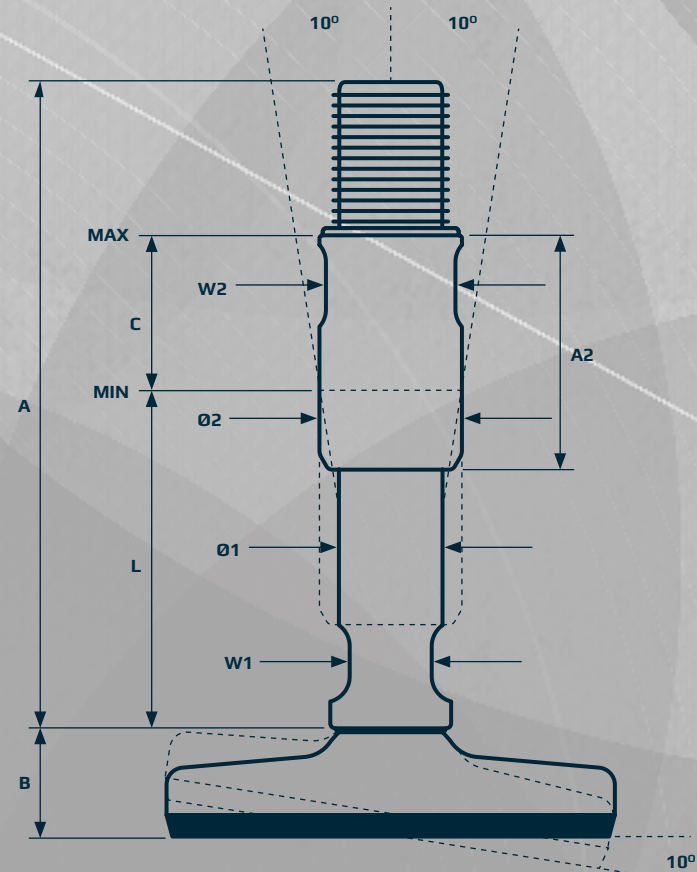
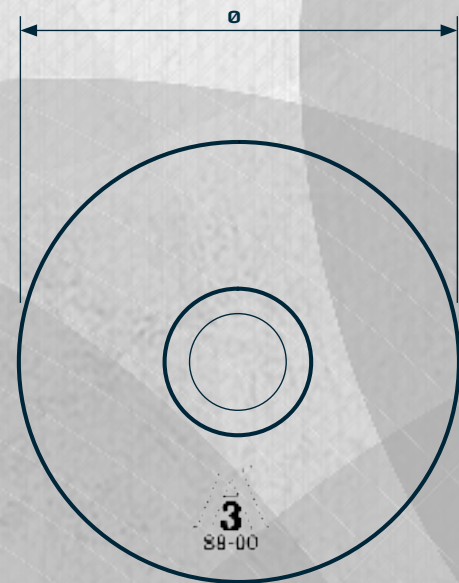
The thread is covered with a hygienic sleeve, which cannot be overadjusted and secures safety against exposed thread. The sleeve also functions as counter nut.

All movable parts are 100% hygienically sealed even if the load on the foot is removed. All sealings are blue and therefore detectable by scanning systems.

Minimum cleaning effort is obtained by the design of the self-draining surfaces. Additionally, the foot is hygienically sealed to the floor by vulcanized FDA-approved, anti-vibration, anti-slip rubber, which blocks out bacteria underneath the footplate.

Included in every shipment

- Official 3-A and USDA hygienic CERTIFIEDs
- Installation instructions
- Cleaning & maintenance instructions



CERTIFIED HYGIENIC LEVELLING FEET XHGS



PRODUCT CODE: FOOT - SPINDLE - SLEEVE
 EXAMPLE: XHG105 - XHJGS16150 - RHOXS1650



FOOT PLATE

TYPE	DIAMETER Ø [mm]	HEIGHT B [mm]	NOM LOAD COMPRESSION [N]	ITEM CODE
105	104	25	110.000	XHG105
125	124	25	110.000	XHG125
150 [†]	150	25	110.000	XHG150



SPINDLE

THREAD	HEIGHT A [mm]	MIN HEIGHT L [mm]	W1 [mm]	DIAMETER Ø1 [mm]	NOM LOAD [N]	ITEM CODE
M16	155	80	13	16	30.800	XHJGS16155
M16	215	110	13	16	24.900	XHJGS16215
M20	155	80	15	20	48.200	XHJGS20155
M20	215	110	15	20	48.200	XHJGS20215
M24	155	80	19	24	69.200	XHJGS24155
M24	215	110	19	24	69.200	XHJGS24215
M30	155	80	24	30	110.200	XHJGS30155
M30	215	110	24	30	110.200	XHJGS30215
M36	155	80	27	32	160.200	XHJGS36155
M36	215	110	27	32	160.200	XHJGS36215



SLEEVE

THREAD	W2 [mm]	DIAMETER Ø2 [mm]	HEIGHT A2 [mm]	ADJUSTMENT C [mm]	ITEM CODE
M16	22	24,8	55	36	RHOXS1655
M16	22	24,8	85	66	RHOXS1685
M20	27	29,7	55	36	RHOXS2055
M20	27	29,7	85	66	RHOXS2085
M24	30	34,5	55	36	RHOXS2455
M24	30	34,5	85	66	RHOXS2485
M30	36	39,5	55	33	RHOXS3055
M30	36	39,5	85	63	RHOXS3085
M36	46	49,5	55	33	RHOXS3655
M36	46	49,5	85	63	RHOXS3685



Total height = A + B
 Minimum usable height = B + L
 Maximum usable height = B + L + C
 Maximum nominal load = Lowest value for footplate or spindle
 Tolerance of total height = +/- 1,5 mm
[†]Coming in 2017



CERTIFIED HYGIENIC XHJS

-  CERTIFIED HYGIENIC
-  MINIMIZED CLEANING TIME
-  MINIMIZED WATER USAGE

The design and patent protected solid XHJS levelling foot is the optimal choice for heavy machinery and equipment that has to comply with the strictest hygienic requirements.

The thread is covered with a hygienic sleeve, which cannot be overadjusted and secures safety against exposed thread. The sleeve also functions as counter nut.

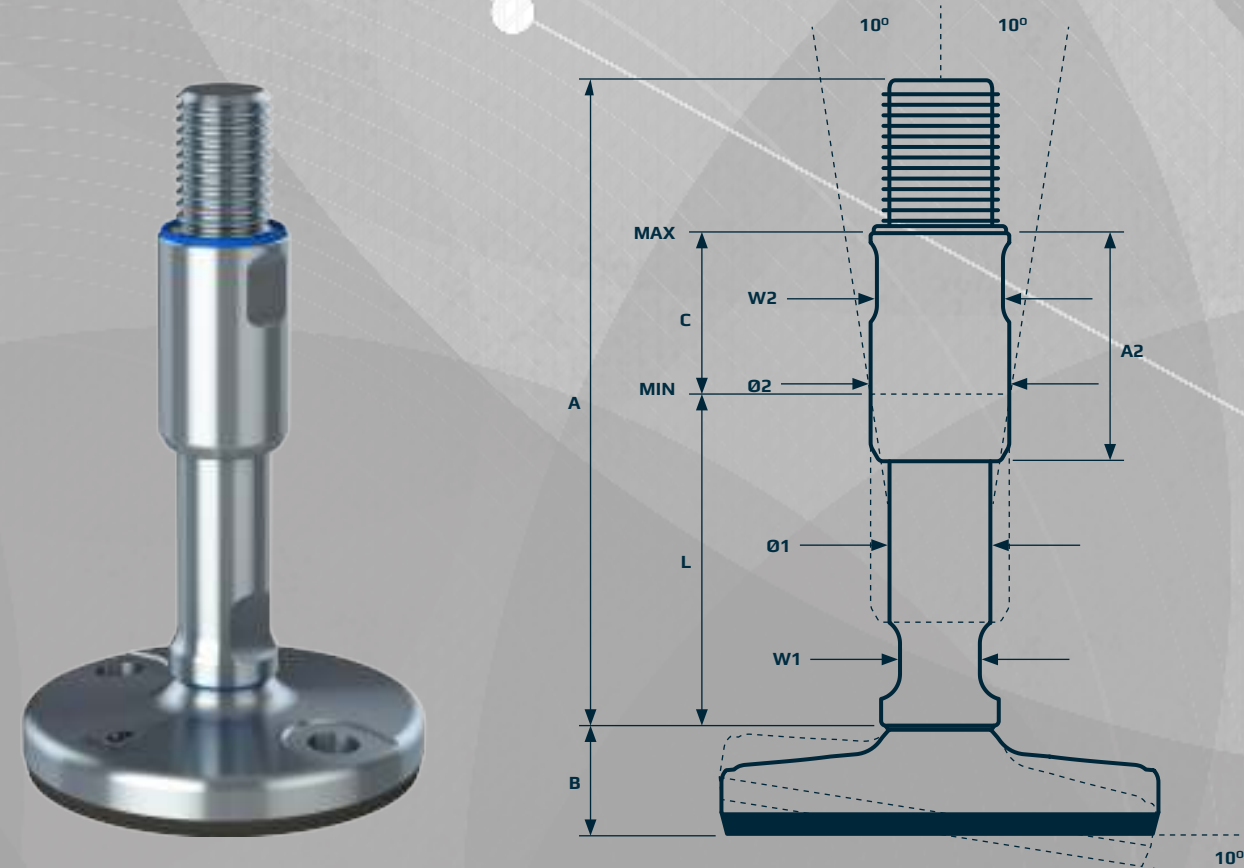
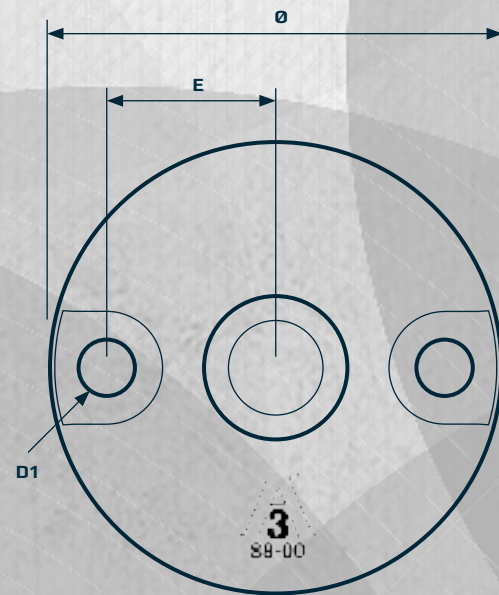
The XHJS is designed to be fastened to the floor by the two fixing holes in the footplate. Hygienic washers according to 3-A, USDA & EHEDG specifications are included. Bolts and dome-headed nuts can be supplied.

All movable parts are 100% hygienically sealed even if the load on the foot is removed. All sealings are blue and therefore detectable by scanning systems.

Minimum cleaning effort is obtained by the design of the self-draining surfaces. Additionally, the foot is hygienically sealed to the floor by vulcanized FDA-approved, anti-vibration, anti-slip rubber, which blocks out bacteria underneath the footplate.

Included in every shipment

- Official 3-A and USDA hygienic CERTIFIEDs
- Installation instructions
- Cleaning & maintenance instructions



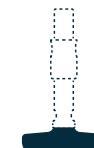
CERTIFIED HYGIENIC LEVELLING FEET XHJS



PRODUCT CODE	FOOT - SPINDLE - SLEEVE
EXAMPLE	XHJ105-XHJG516150-RHOXS1650



FOOT PLATE



TYPE	DIAMETER Ø [mm]	HEIGHT B [mm]	HOLE POSITION E [mm]	HOLE DIAMETER D1 [mm]	NOM LOAD COMPRESSION [N]	ITEM CODE
105	104	25	38	13	110.000	XHJ105
125	124	25	47	13	110.000	XHJ125
150 ^{*)}	149	25	62	13	110.000	XHJ150

SPINDLE



THREAD	HEIGHT A [mm]	MIN HEIGHT L [mm]	W1 [mm]	DIAMETER Ø1 [mm]	NOM LOAD [N]	ITEM CODE
M16	155	80	13	16	30.800	XHJG516155
M16	215	110	13	16	24.900	XHJG516215
M20	155	80	15	20	48.200	XHJG520155
M20	215	110	15	20	48.200	XHJG520215
M24	155	80	19	24	69.200	XHJG524155
M24	215	110	19	24	69.200	XHJG524215
M30	155	80	24	30	110.200	XHJG530155
M30	215	110	24	30	110.200	XHJG530215
M36	155	80	27	32	160.200	XHJG536155
M36	215	110	27	32	160.200	XHJG536215

SLEEVE



THREAD	W2 [mm]	DIAMETER Ø2 [mm]	HEIGHT A2 [mm]	ADJUSTMENT C [mm]	ITEM CODE
M16	22	24,8	55	36	RHOXS1655
M16	22	24,8	85	66	RHOXS1685
M20	27	29,7	55	36	RHOXS2055
M20	27	29,7	85	66	RHOXS2085
M24	30	34,5	55	36	RHOXS2455
M24	30	34,5	85	66	RHOXS2485
M30	36	39,5	55	33	RHOXS3055
M30	36	39,5	85	63	RHOXS3085
M36	46	49,5	55	33	RHOXS3655
M36	46	49,5	85	63	RHOXS3685

Total height = A + B
 Minimum usable height = B + L
 Maximum usable height = B + L + C
 Maximum nominal load = Lowest value for footplate or spindle
 Tolerance of total height = +/- 1,5 mm
^{*)} Coming in 2017



CERTIFIED HYGIENIC XHF

-  CERTIFIED HYGIENIC
-  MINIMIZED CLEANING TIME
-  MINIMIZED WATER USAGE

The design and patent protected XHF levelling foot is the optimal choice for machinery and equipment that has to comply with the strictest hygienic requirements.

The XHF offers supreme height adjustability up to +/- 220 mm as standard and has a sealed low-friction thread (lubricated for life).

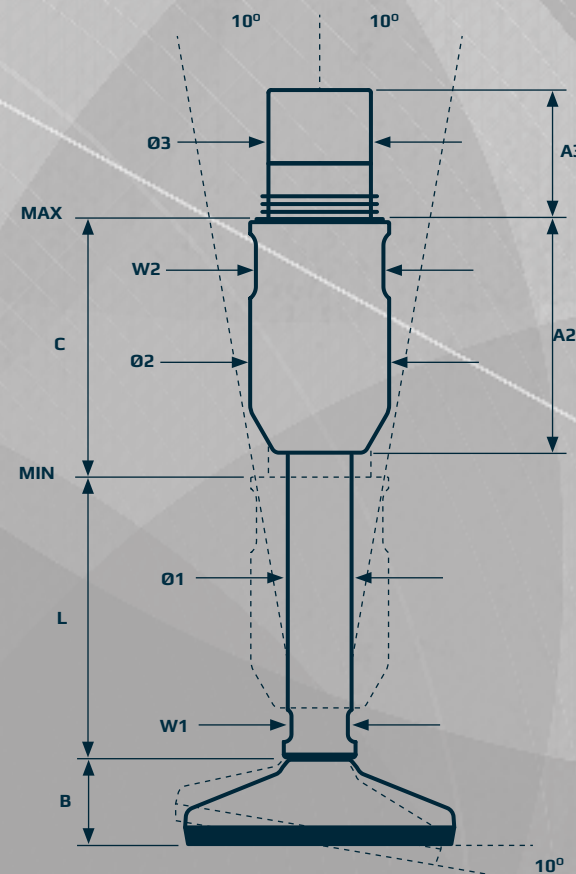
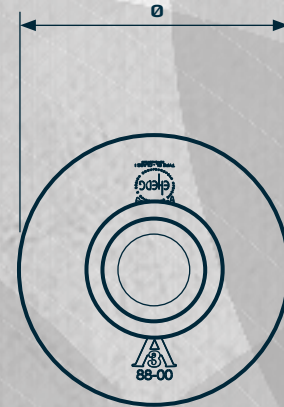
Flexible mounting with optional flanges or thread adaptor, no risk of over-adjusting the sleeve and thereby exposing the thread.

All movable parts are 100% hygienically sealed even if the load on the foot is removed. All sealings are blue and therefore detectable by scanning systems.

Minimum cleaning effort is obtained by the design of the self-draining surfaces. Additionally, the foot is hygienically sealed to the floor by vulcanized FDA-approved, anti-vibration, anti-slip rubber, which blocks out bacteria underneath the footplate.

Included in every shipment

- Official 3-A, USDA and EHEDG hygienic CERTIFIEDs
- Installation instructions
- Cleaning & maintenance instructions



CERTIFIED HYGIENIC LEVELLING FEET XHF



PRODUCT CODE	FOOT - Spindle - SLEEVE
EXAMPLE	XH065 - XHF - V1



FOOT PLATE



TYPE	DIAMETER Ø [mm]	HEIGHT B [mm]	NOM LOAD COMPRESSION [N]	ITEM CODE
65	65	28	9.000	XH065
80	80	33	15.000	XH080
105	105	33	22.000	XH105
125	125	34	32.000	XH125
150	150	34	65.000	XH150

SPINDLE



TYPE	MIN HEIGHT L [mm]	DIAMETER Ø1 [mm]	W1 [mm]	ITEM CODE
S1	71	25	22	XHF
S2	111	25	22	XHF
S3	151	25	22	XHF
S4	201	25	22	XHF

SLEEVE



TYPE	ADJUSTMENT C [mm]	HEIGHT A2 [mm]	HEIGHT A3 [mm]	DIAMETER Ø2 [mm]	DIAMETER Ø3 [mm]	W2 [mm]	ITEM CODE
M44x2	100	51	90	54,8	40	50	V1
M44x2	100	91	50	54,8	40	50	V2
M44x2	100	131	10	54,8	40	50	V3
M44x2	S3 + adaptor						



Total height = B + L + C + A2
 Minimum usable height = B + L
 Maximum usable height = B + L + C
 Tolerance of total height = +/-1,5 mm
 Extra long S4 = S3 + adaptor



CERTIFIED HYGIENIC XHF FIXING

-  **CERTIFIED HYGIENIC**
-  **MINIMIZED CLEANING TIME**
-  **MINIMIZED WATER USAGE**

The design and patent protected XHF Fixing levelling foot is the optimal choice for machinery and equipment that has to comply with the strictest hygienic requirements.

The XHF Fixing is designed to be fastened to the floor by the fixing plate. Hygienic washer according to 3-A, USDA & EHEDG specifications is included. Bolt and dome-headed nut can be supplied.

The XHF Fixing offers supreme height adjustability up to +/- 220 mm as standard and has a sealed low-friction thread (lubricated for life).

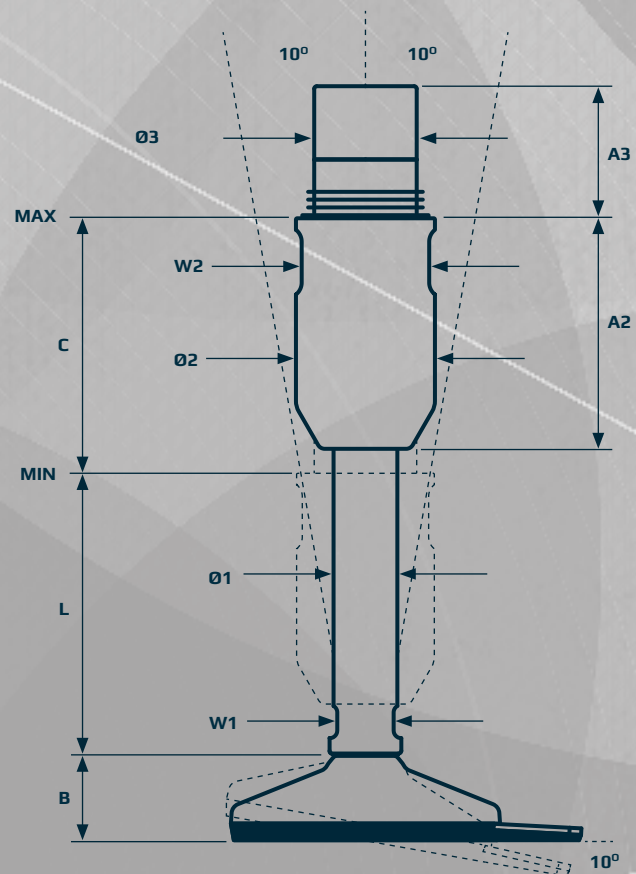
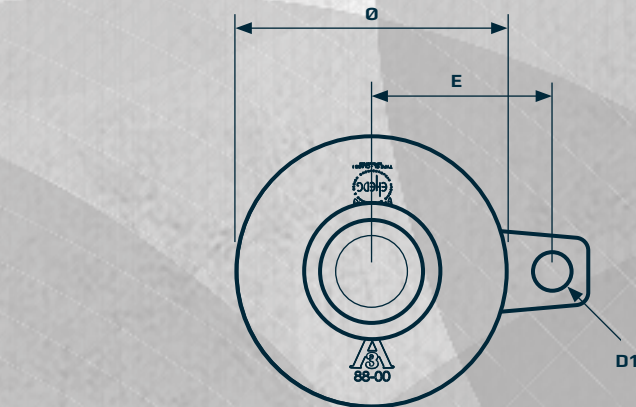
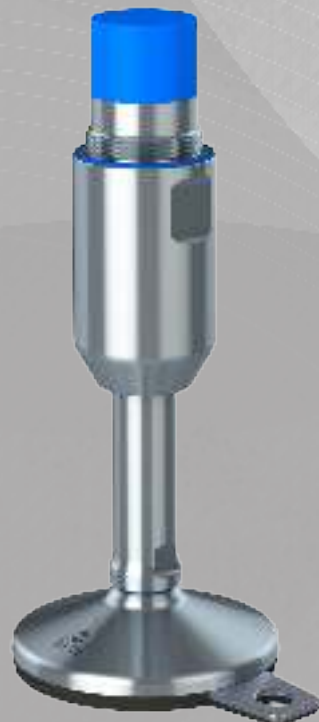
Flexible mounting with optional flanges or thread adaptor, no risk of over-adjusting the sleeve and thereby exposing the thread.

All movable parts are 100% hygienically sealed even if the load on the foot is removed. All sealings are blue and therefore detectable by scanning systems.

Minimum cleaning effort is obtained by the design of the self-draining surfaces. Additionally, the foot is hygienically sealed to the floor by vulcanized FDA-approved, anti-vibration, anti-slip rubber, which blocks out bacteria underneath the footplate.

Included in every shipment

- Official 3-A, USDA and EHEDG hygienic CERTIFIEDs
- Installation instructions
- Cleaning & maintenance instructions



CERTIFIED HYGIENIC LEVELLING FEET XHF FIXING



PRODUCT CODE **FOOT - Spindle - SLEEVE**

EXAMPLE XH066 - XHF - V1

FOOT PLATE

TYPE	DIAMETER Ø [mm]	HEIGHT B [mm]	HOLE POSITION E [mm]	HOLE DIAMETER Ø1 [mm]	NOM LOAD COMPRESSION [N]	ITEM CODE
66	65	28	46,8	15	9.000	XH066
81	80	33	53,2	15	15.000	XH081
106	105	33	70,0	15	22.000	XH106



SPINDLE

TYPE	MIN HEIGHT L [mm]	DIAMETER Ø1 [mm]	W1 [mm]	ITEM CODE
S1	71	25	22	XHF
S2	111	25	22	XHF
S3	151	25	22	XHF
S4	201	25	22	XHF



SLEEVE

THREAD	ADJUSTMENT C [mm]	HEIGHT A1 [mm]	HEIGHT A2 [mm]	DIAMETER Ø2 [mm]	DIAMETER Ø3 [mm]	W2 [mm]	ITEM CODE
M44x2	100	51	90	54,8	40	41	V1
M44x2	100	91	50	54,8	40	41	V2
M44x2	100	131	10	54,8	40	41	V3
M44X2	S3 + adaptor						



Total height = B + L + C + A2
 Minimum usable height = B + L
 Maximum usable height = B + L + C
 Tolerance of total height = +/- 1,5 mm
 Extra long S4 = S3 + adaptor



CERTIFIED HYGIENIC XHFT

-  **CERTIFIED HYGIENIC**
-  **MINIMIZED CLEANING TIME**
-  **MINIMIZED WATER USAGE**

The design and patent protected XHFT levelling foot is the optimal choice for machinery and equipment that has to comply with the strictest hygienic requirements.

The XHFT consists of a separated footplate and spindle connected by the diametrically centered elevation on the footplate.

The XHFT offers supreme height adjustability up to +/- 220 mm as standard and has a sealed low-friction thread (lubricated for life).

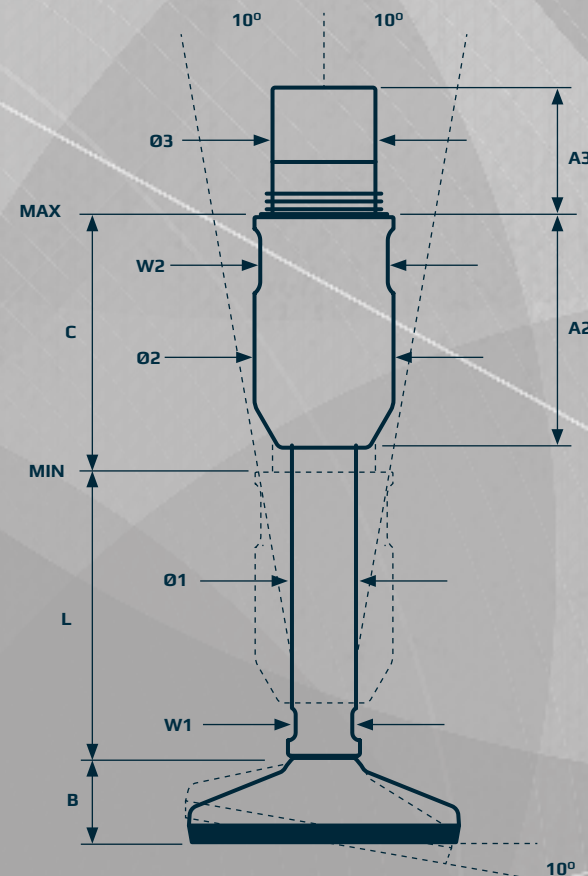
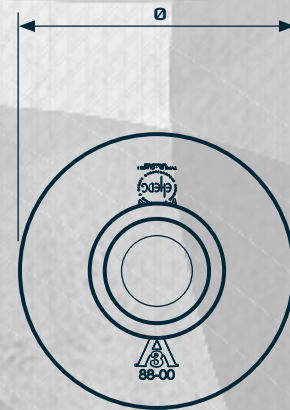
Flexible mounting with optional flanges or thread adaptor, no risk of over-adjusting the sleeve and thereby exposing the thread.

All movable parts are 100% hygienically sealed. All sealings are blue and therefore detectable by scanning systems.

Minimum cleaning effort is obtained by the design of the self-draining surfaces. Additionally, the foot is hygienically sealed to the floor by vulcanized FDA-approved, anti-vibration, anti-slip rubber, which blocks out bacteria underneath the footplate.

Included in every shipment

- Official 3-A, USDA and EHEDG hygienic CERTIFIEDs
- Installation instructions
- Cleaning & maintenance instructions



CERTIFIED HYGIENIC LEVELLING FEET XHFT



PRODUCT CODE **FOOT - Spindle - SLEEVE**

EXAMPLE XHFT080 - XHF - V1



FOOT PLATE

TYPE	DIAMETER Ø [mm]	HEIGHT B [mm]	NOM LOAD COMPRESSION [N]	ITEM CODE
80	80	33	15.000	XHF080
105	105	33	22.000	XHF105
150	150	34	70.000	XHF150



SPINDLE

TYPE	MIN HEIGHT L [mm]	DIAMETER Ø1 [mm]	W1 [mm]	ITEM CODE
S1	71	25	22	XHF
S2	111	25	22	XHF
S3	151	25	22	XHF
S4	201	25	22	XHF



SLEEVE

THREAD	ADJUSTMENT C [mm]	HEIGHT A2 [mm]	HEIGHT A3 [mm]	DIAMETER Ø2 [mm]	DIAMETER Ø3 [mm]	W2 [mm]	ITEM CODE
M44x2	100	51	90	54,8	40	41	V1
M44x2	100	91	50	54,8	40	41	V2
M44x2	100	131	10	54,8	40	41	V3
M44X2	S3 + adaptor						



Total height = B + L + C + A2
 Minimum usable height = B + L
 Maximum usable height = B + L + C
 Tolerance of total height = +/- 1,5 mm



CERTIFIED HYGIENIC XHFG

-  **CERTIFIED HYGIENIC**
-  **MINIMIZED CLEANING TIME**
-  **MINIMIZED WATER USAGE**

The design and patent protected solid XHFG levelling foot is the optimal choice for heavy machinery and equipment that has to comply with the strictest hygienic requirements.

The XHFG offers supreme height adjustability up to +/- 220 mm as standard and has a sealed low-friction thread (lubricated for life).

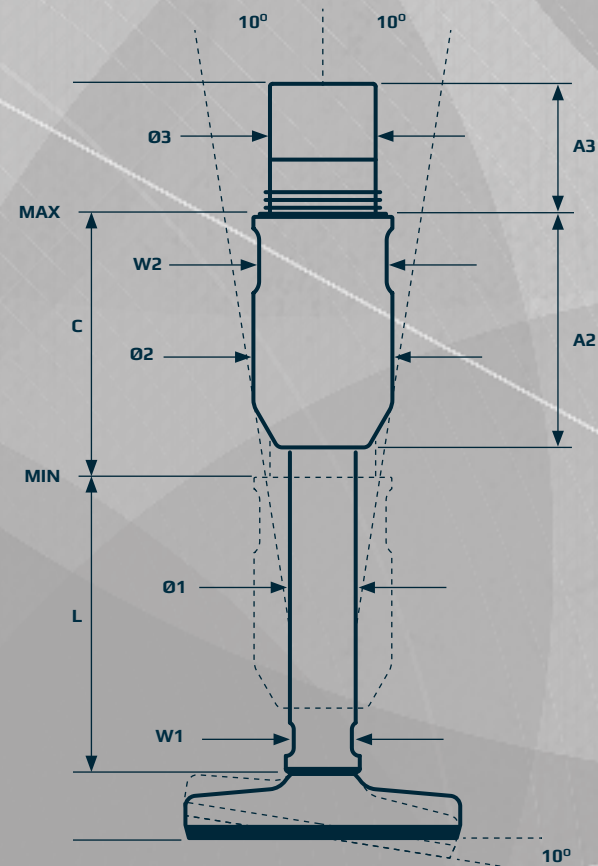
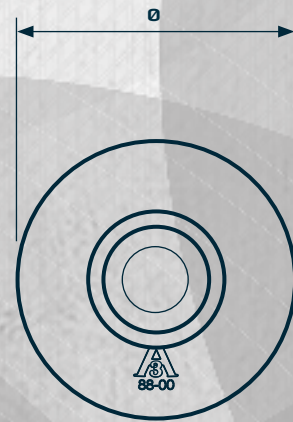
Flexible mounting with optional flanges or thread adaptor, no risk of over-adjusting the sleeve and thereby exposing the thread.

All movable parts are 100% hygienically sealed even if the load on the foot is removed. All sealings are blue and therefore detectable by scanning systems.

Minimum cleaning effort is obtained by the design of the self-draining surfaces. Additionally, the foot is hygienically sealed to the floor by vulcanized FDA-approved, anti-vibration, anti-slip rubber, which blocks out bacteria underneath the footplate.

Included in every shipment

- Official 3-A and USDA hygienic CERTIFIEDs
- Installation instructions
- Cleaning & maintenance instructions



CERTIFIED HYGIENIC LEVELLING FEET XHFG



PRODUCT CODE	FOOT - Spindle - SLEEVE
EXAMPLE	XHG105- XHF - V1



FOOT PLATE

TYPE	DIAMETER Ø [mm]	HEIGHT B [mm]	NOM LOAD COMPRESSION [N]	ITEM
105	104	25	95.500	XHG105
125	124	25	95.500	XHG125
150	149	25	95.500	XHG150



SPINDLE

TYPE	MIN HEIGHT L [mm]	DIAMETER Ø1 [mm]	W1 [mm]	ITEM CODE
S1	71	25	22	XHF
S2	111	25	22	XHF
S3	151	25	22	XHF
S4	201	25	22	XHF



SLEEVE

TYPE	ADJUSTMENT C [mm]	HEIGHT A2 [mm]	HEIGHT A3 [mm]	DIAMETER Ø2 [mm]	DIAMETER Ø3 [mm]	W2 [mm]	ITEM CODE
M44x2	100	51	90	54,8	40	50	V1
M44x2	100	91	50	54,8	40	50	V2
M44x2	100	131	10	54,8	40	50	V3
M44x2	S3 + adaptor						



Total height = B + L + C + A3
 Minimum usable height = B + L
 Maximum usable height = B + L + C
 Tolerance of total height = +/- 1,5 mm



CERTIFIED HYGIENIC XHFJ

-  CERTIFIED HYGIENIC
-  MINIMIZED CLEANING TIME
-  MINIMIZED WATER USAGE

The design and patent protected solid XHFJ levelling foot is the optimal choice for heavy machinery and equipment that has to comply with the strictest hygienic requirements.

The XHFJ offers supreme height adjustability up to +/- 220 mm as standard and has a sealed low-friction thread (lubricated for life).

The XHFJ is designed to be fastened to the floor by the two fixing holes in the footplate. Hygienic washers according to 3-A, USDA & EHEDG specifications are included. Bolts and dome-headed nuts can be supplied.

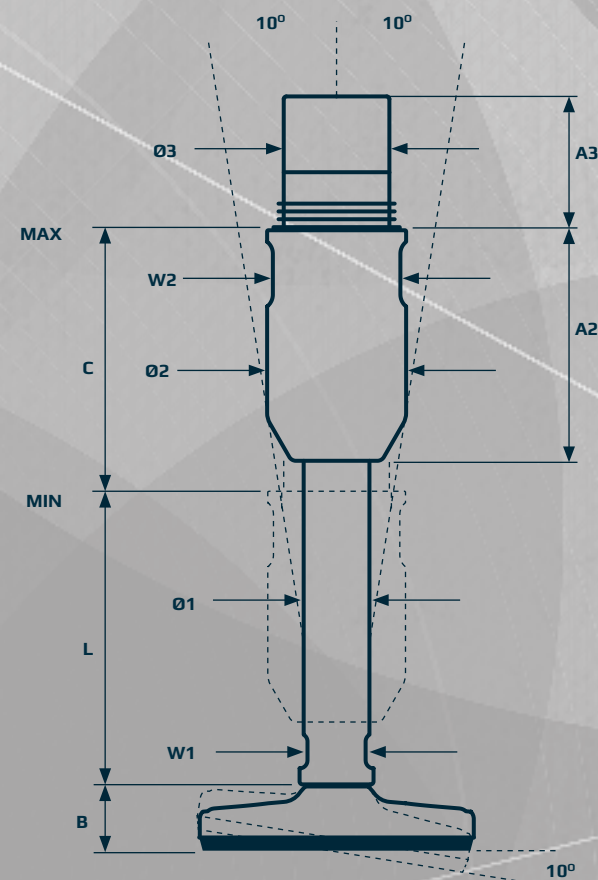
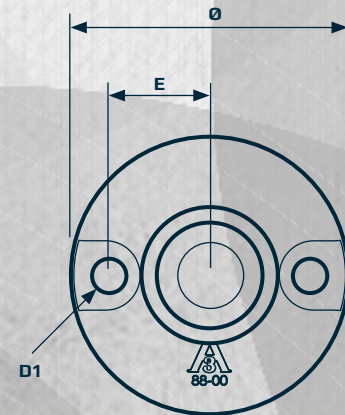
Flexible mounting with optional flanges or thread adaptor, no risk of over-adjusting the sleeve and thereby exposing the thread.

All movable parts are 100% hygienically sealed even if the load on the foot is removed. All sealings are blue and therefore detectable by scanning systems.

Minimum cleaning effort is obtained by the design of the self-draining surfaces. Additionally, the foot is hygienically sealed to the floor by vulcanized FDA-approved, anti-vibration, anti-slip rubber, which blocks out bacteria underneath the footplate.

Included in every shipment

- Official 3-A and USDA hygienic CERTIFIEDs
- Installation instructions
- Cleaning & maintenance instructions



CERTIFIED HYGIENIC LEVELLING FEET XHFJ



PRODUCT CODE FOOT - SPINDLE - SLEEVE

EXAMPLE XHJ105-XHF-V1

FOOT PLATE

TYPE	DIAMETER Ø [mm]	HEIGHT B [mm]	HOLE POSITION E [mm]	HOLE DIAMETER D1 [mm]	NOM LOAD COMPRESSION [N]	ITEM CODE
105	105	25	38	13	95.500	XHF105
125	125	25	47	13	95.500	XHF125



SPINDLE

TYPE	MIN HEIGHT L [mm]	DIAMETER Ø1 [mm]	W1 [mm]	ITEM CODE
S1	71	25	22	XHF
S2	111	25	22	XHF
S3	151	25	22	XHF
S4	201	25	22	XHF



SLEEVE

TYPE	ADJUSTMENT C [mm]	HEIGHT A2 [mm]	HEIGHT A3 [mm]	DIAMETER Ø2 [mm]	DIAMETER Ø3 [mm]	W2 [mm]	ITEM CODE
M44x2	100	51	90	54,8	40	50	V1
M44x2	100	91	50	54,8	40	50	V2
M44x2	100	131	10	54,8	40	50	V3
M44x2	S3 + adaptor						



Total height = B + L + C + A2
 Minimum usable height = B + L
 Maximum usable height = B + L + C
 Maximum nominal load = Lowest value for footplate or spindle
 Tolerance of total height = +/- 1,5 mm



ACCESSORIES TOP COVER

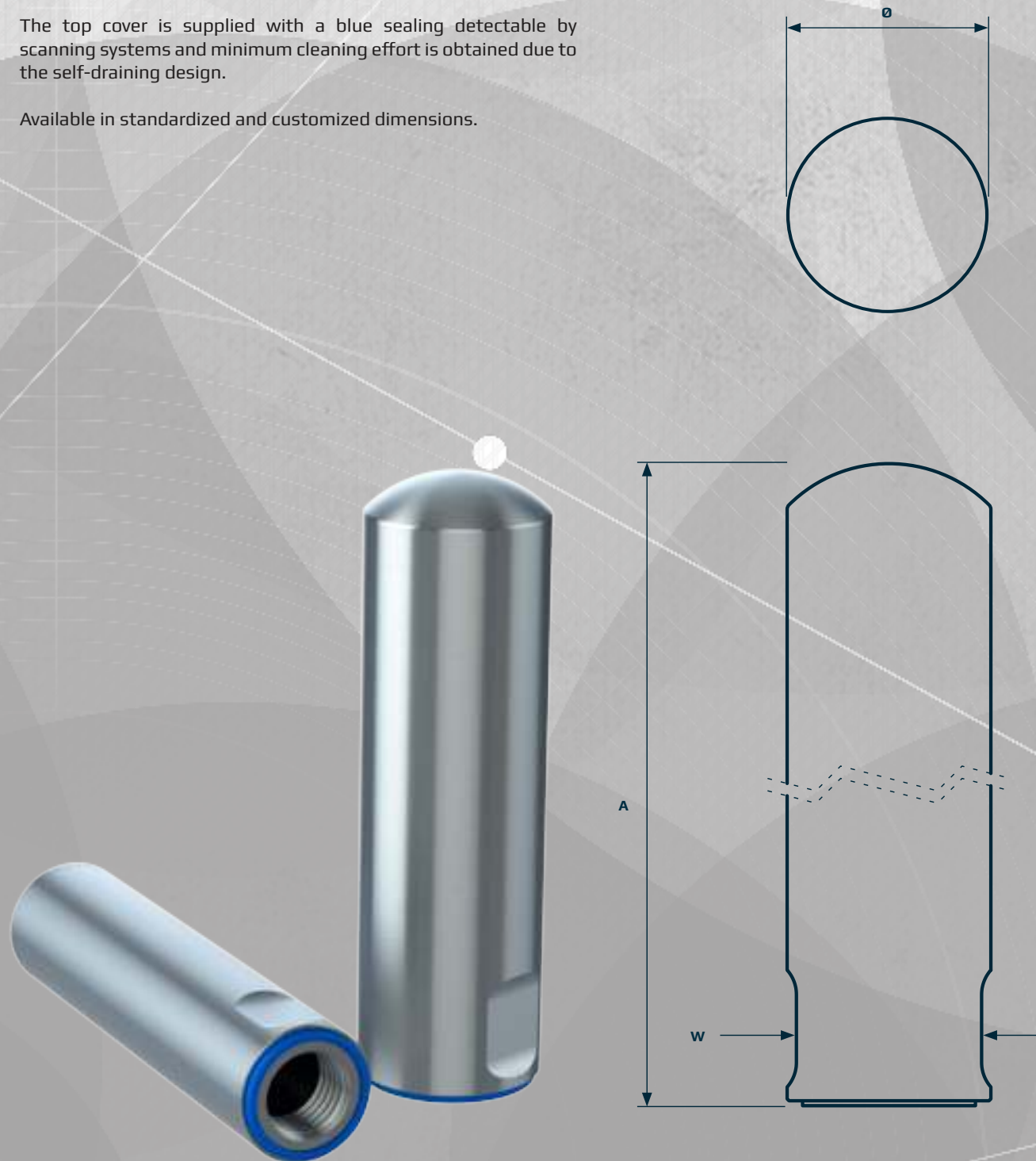
-  CERTIFIED HYGIENIC
-  MINIMIZED CLEANING TIME
-  MINIMIZED WATER USAGE

The top cover is designed to be used in situations where the top of the thread is exposed, which compromises the hygienic performance and certification of the levelling foot.

By applying the top cover the exposed thread is hygienically covered. The top cover can also function as counter nut.

The top cover is supplied with a blue sealing detectable by scanning systems and minimum cleaning effort is obtained due to the self-draining design.

Available in standardized and customized dimensions.



ACCESSORIES FOR LEVELLING FEET TOP COVER



THOX



THREAD	W [mm]	DIAMETER Ø [mm]	HEIGHT	ITEM CODE
			A [mm]	
M16	22	24,8	108	THOX16100
M20	27	29,7	109	THOX20100
M24	30	33	110	THOX24100
M30	36	39,5	111	THOX30100
M36	46	49,5	113	THOX36100
M42	52	55,5	114	THOX42100
M56	66	69,5	117	THOX56100



ACCESSORIES FLANGES

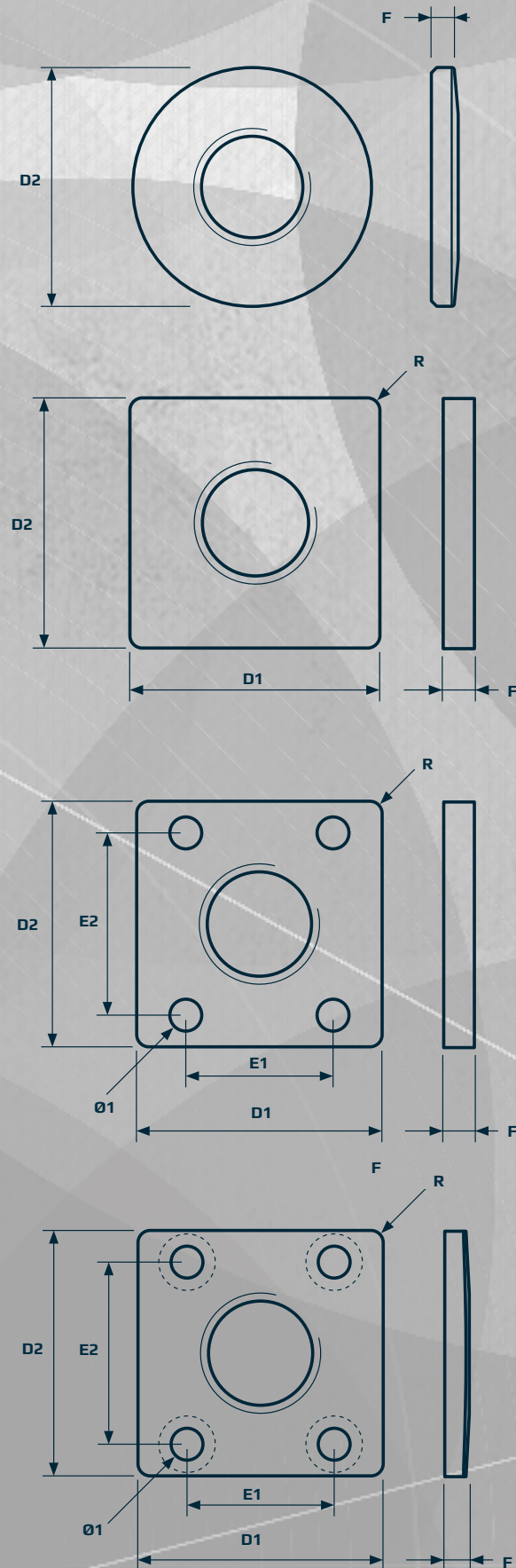
-  CERTIFIED HYGIENIC
-  MINIMIZED CLEANING TIME
-  MINIMIZED WATER USAGE

The flange is used when mounting the XHF levelling feet into the machine or equipment.

Machinery and equipment requires different mounting and therefore the flange is available in several variations.

- Squared
- Round
- Large variety of sizes
- Install by bolting or welding

Customized sizes and shapes can be supplied by request.



ACCESSORIES FOR LEVELLING FEET FLANGES



ROUND - WELDING



CERTIFIED	DIAMETER Ø [mm]	THICKNESS F [mm]	THREAD	ITEM CODE
YES	60,3	10	M44x2,0	WFRX060
YES	70,0	10	M44x2,0	WFRX070
YES	76,2	10	M44x2,0	WFRX076
YES	88,9	10	M44x2,0	WFRX089

SQUARED - WELDING



CERTIFIED	LENGHT D1 [mm]	WIDTH D2 [mm]	THICKNESS F [mm]	RADIUS R [mm]	THREAD	ITEM CODE
NO	80	80	10	5	M44X2,0	WFSF080
NO	100	100	10	5	M44X2,0	WFSF100

SQUARED - BOLTING



CERTIFIED	LENGHT D1 [mm]	WIDTH D2 [mm]	THICKNESS F [mm]	DISTANCE E1 [mm]	DISTANCE E2 [mm]	RADIUS R [mm]	HOLE Ø1 [mm]	THREAD	ITEM CODE
NO	100	100	10	74,2	60,0	13	5	M44x2,0	WFSF10010746013
NO	100	100	10	74,2	74,2	9	5	M44x2,0	WFSF10010747409

SQUARED - BOLTING



CERTIFIED	LENGHT D1 [mm]	WIDTH D2 [mm]	THICKNESS F [mm]	DISTANCE E1 [mm]	DISTANCE E2 [mm]	RADIUS R [mm]	HOLE Ø1 [mm]	THREAD	ITEM CODE
YES	100	100	10	74,2	60,0	5	13	M44x2,0	WFSX10010746013
YES	100	100	10	74,2	74,2	5	9	M44x2,0	WFSX10010747409

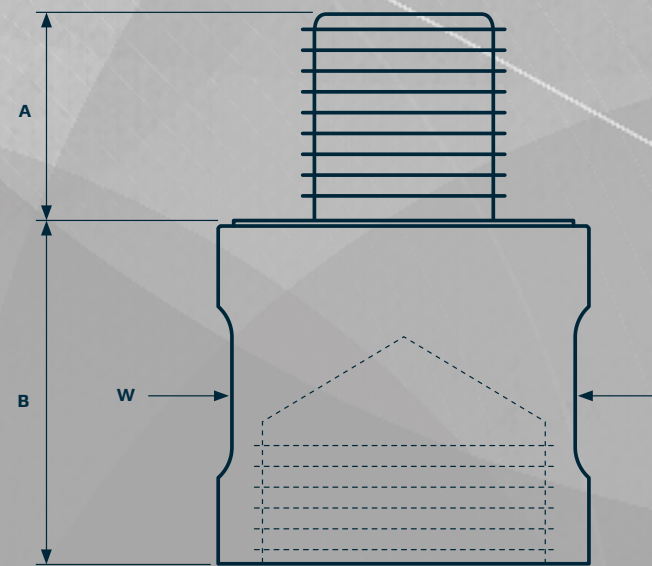
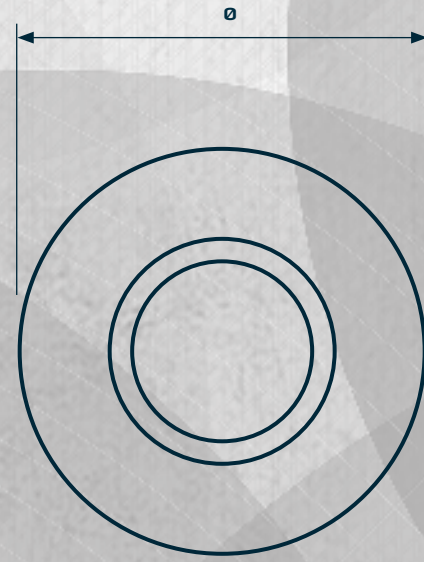


Squared hygienic flanges must be installed with certified washers and bolts. Flat flanges are not 3-A, USDA & EHEDG certified.

ACCESSORIES THREAD ADAPTOR

-  CERTIFIED HYGIENIC
-  MINIMIZED CLEANING TIME
-  MINIMIZED WATER USAGE

The thread adaptor is an add-on for the XHF system. It converts the size and type of the thread and extends the sleeve. Furthermore, it is equipped with blue sealings detectable by scanning systems. Available in customized sizes.



ACCESSORIES FOR LEVELLING FEET THREAD ADAPTOR



THREAD ADAPTOR



THREAD	W [mm]	DIAMETER Ø [mm]	HEIGHT A [mm]	HEIGHT B [mm]	ITEM CODE
M20	50	54,5	20	50	AX2050
M24	50	54,5	24	50	AX2450
M30	50	54,5	30	50	AX3050
M36	50	54,5	36	50	AX3650
M42	50	54,5	42	50	AX4250
M44x2	50	54,5	10	50	AX4450



ACCESSORIES FOR LEVELLING FEET

DOVE-HEADED NUTS

- Stainless steel AISI 304/A2, 1.4301
- Standard dome-headed nuts (DIN 1587 A2)
- All dimensions available



ACCESSORIES FOR LEVELLING FEET

DOVE-HEADED NUTS

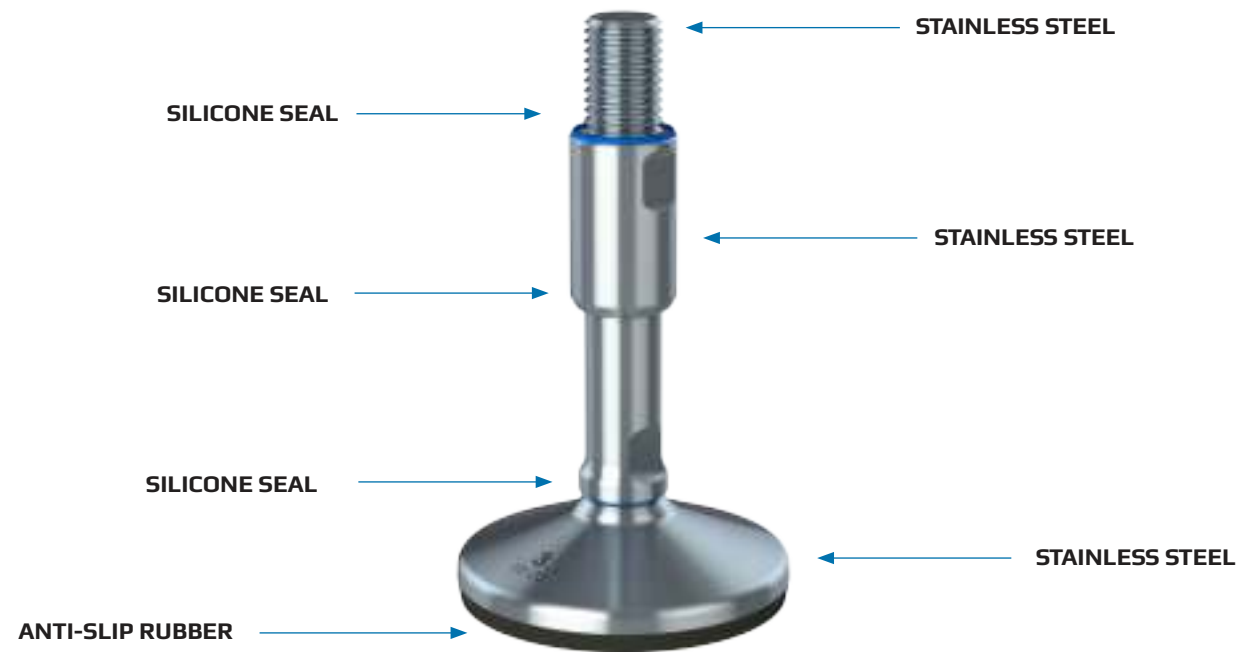
DOVE-HEADED NUTS DIN 1587 A2



THREAD	DIN NORM	TOTAL HEIGHT		WRENCH HEIGHT	W [mm]	OUTER DIAMETER A [mm]	ITEM CODE
		B1 [mm]	B2 [mm]				
M10	DIN 1587 A2	17	8	17	18,90	DIN1587A2M10	
M12	DIN 1587 A2	19	10	19	21,10	DIN1587A2M12	
M16	DIN 1587 A2	24	13	24	26,75	DIN1587A2M16	
M20	DIN 1587 A2	34	16	30	33,53	DIN1587A2M20	
M24	DIN 1587 A2	42	19	36	39,98	DIN1587A2M24	

CLEANING & MAINTENANCE

CERTIFIED HYGIENIC LEVELLING FEET



CLEANING

1. Rinse with water (maximum temperature ~40°C on proteins).
2. Distribute and cover all surfaces with foaming alkaline detergent for minimum 10 minutes. All standard products within the industry can be used. Follow supplier recommendations for temperature (maximum 100°C) and concentration depending on foaming detergent.
3. Rinse with hot water (maximum 100°C) with low-medium pressure (approximately 8-12 bar) until it is visibly clean. Cleaning of the levelling foot including sealings and dome-headed nuts can normally be done with a spraying nozzle pointing in a downwards direction approximately 45°. For heavy duty cleaning a more direct-oriented nozzle can be necessary. Be careful not to damage the sealings if high pressure cleaning is used. Keep nozzle at minimum 200-300 mm distance.
4. Mechanical cleaning may be necessary if the levelling foot is severely soiled. Cleaning must be executed with a soft brush or soft plastic scraper together with a more direct pointing nozzle spray. Steel scraper, steel brush or other sharp metallic tools are strictly prohibited, since the sealings can be severely damaged and the steel surfaces will be scratched.

MAINTENANCE

1. If the sealings on the sleeve are damaged they must be replaced. Always use genuine spare parts from NGI.
2. If the sealing between the foot and the spindle is damaged, replace the whole levelling foot and install a new one. An assembled levelling foot cannot be separated.
3. Load on the levelling foot must be obtained in order for the footplate to be hygienically sealed to the floor.
4. For a levelling foot for floor fixing always make sure that the floor fixing nut or bolt is tightened as specified in the installation manual. Tighten if necessary. If replacement of nuts or washers is always use genuine spare parts from NGI.
5. If any readjustments are necessary the levelling foot and the nearest surroundings must be cleaned carefully to prevent any soil from entering the sleeve.



INSTALLATION

XH, XHS

It is important to follow these instructions in order to ensure the certified hygienic design and functionality.

This documentation is enclosed with the levelling feet and should always be handed over to the end-user.

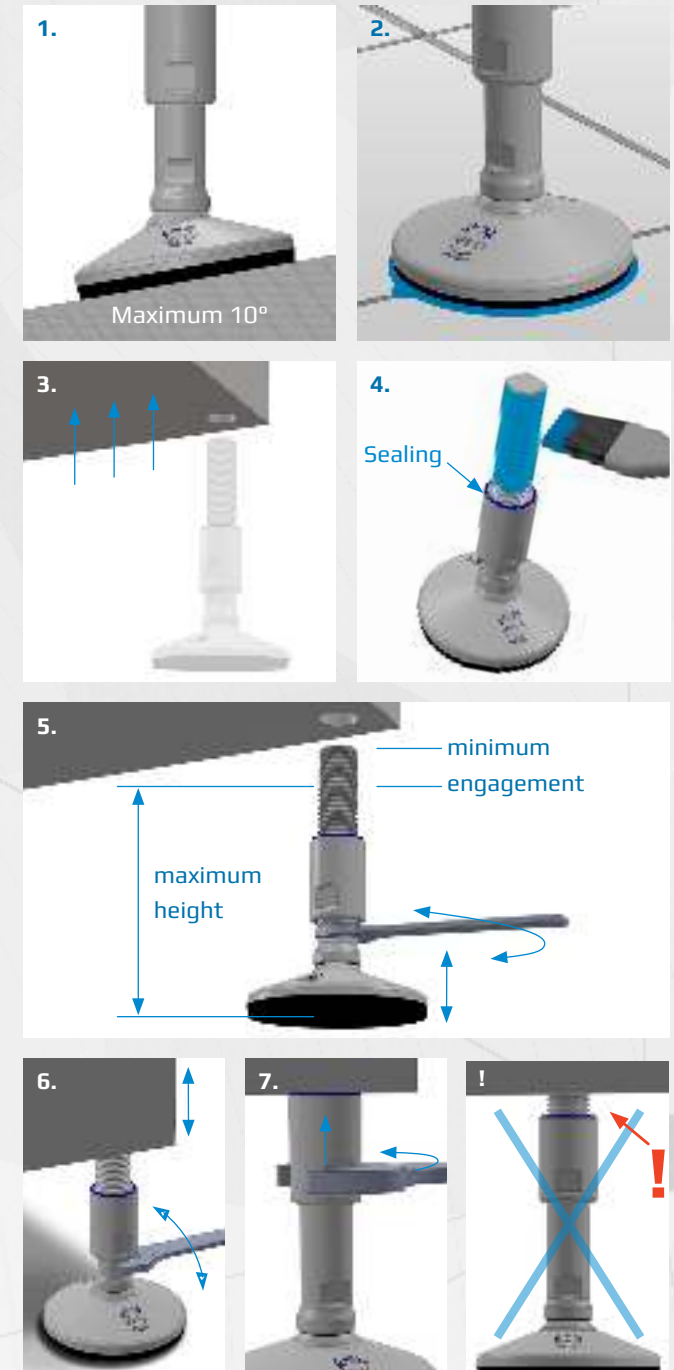
1. Prior to installation of the levelling foot ensure that the floor does not exceed maximum slope.
2. When installing, make sure that the footplate does not span over cracks, grout lines or other floor imperfections. If unavoidable, seal the cavity with bonding material under and around the edge of the footplate.
3. Lift or jack up the machinery or equipment to install the levelling foot.
4. Make sure that the sealing is correctly fixed on top of the sleeve. Grease the exposed thread with FoodLube Universal Grease and make sure to remove any excess grease after installation.
5. Install the levelling foot and use a wrench to adjust the vertical position and make sure that the engagement is no less than the diameter of the thread.

Repeat step 4-5 for all feet supporting the machinery.

6. Lower the machinery so that the feet rest on the floor. Perform final height and levelling adjustments if needed and ensure that the load is uniformly distributed on all feet.
7. Use a wrench to rotate and tighten the sleeve against the machinery or equipment. Make sure that the sleeve is tightened to counter-lock the levelling foot and cover the thread.



If the levelling foot is not fully inserted into the machinery or equipment the thread will become partly exposed. In this case, it is not correctly installed and will neither meet 3A, USDA & EHEDG hygienic demands nor load specifications.



INSTALLATION XHF, XHF

It is important to follow these instructions in order to ensure the certified hygienic design and functionality.

This documentation is enclosed with the levelling feet and should always be handed over to the end-user.

1. Prior to installation of the levelling foot ensure that the floor does not exceed maximum slant.
2. When installing, make sure that the footplate does not span over cracks, grout lines or other floor imperfections. If unavoidable, seal the cavity with bonding material under and around the edge of the footplate.
3. Lift or jack up the machinery or equipment to install the levelling foot.
4. Apply the optional flange to the machinery by welding or bolting. For a hygienic solution use dome-headed nuts.
5. Make sure that the sealing is correctly fixed on top of the sleeve and install the levelling foot using a wrench and apply Loctite if necessary.

Repeat step 4-5 for all feet supporting the machinery.

6. Lower the machinery so that the feet rest on the floor. Perform final height and levelling adjustments if needed and ensure that the load is uniformly distributed on all feet.



No maintenance lubrication is needed. The sealed low-friction thread is lubricated for life and the levelling foot is secured against over-adjustment and exposure of the thread.

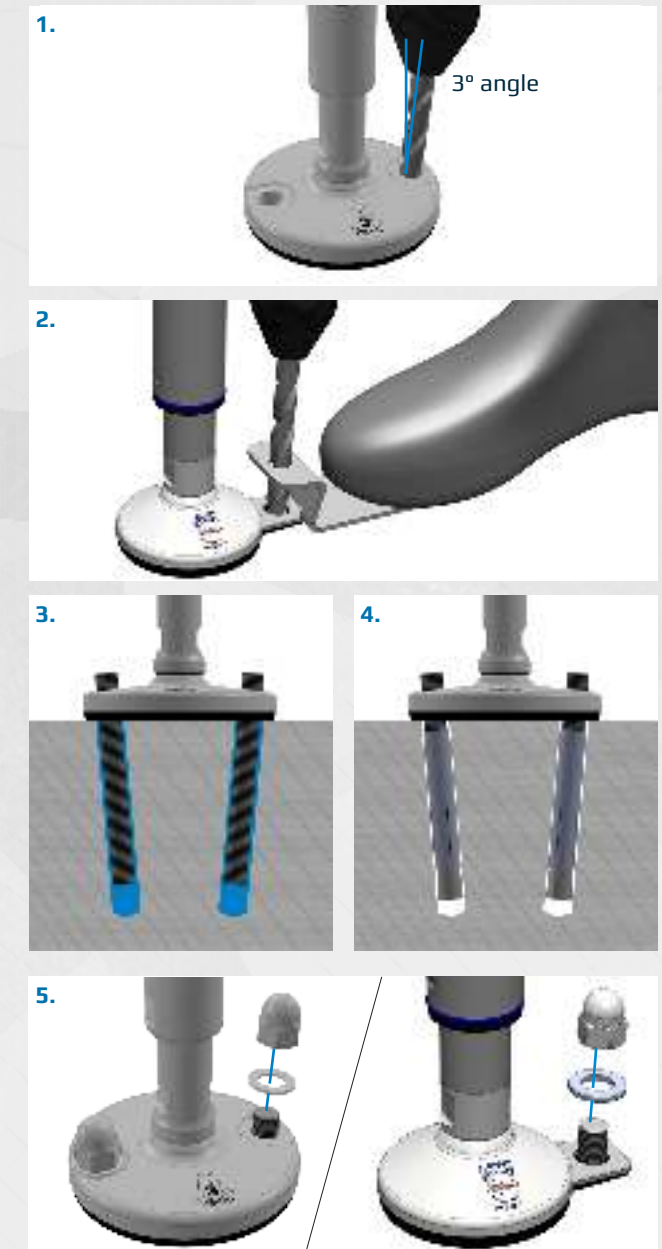


INSTALLATION FLOOR FIXING LEVELLING FEET

It is important to follow these instructions in order to ensure the certified hygienic design and functionality.

This documentation is enclosed with the levelling feet and should always be handed over to the end-user.

1. Hold the drill in a 3° angle so that it fits the direction of the fixing hole in the levelling foot. Drill the hole through the footplate down into the floor.
2. If necessary, use the guide tool to ensure the 3° angle. Place and hold the guide tool against the fixing plate and insert the drill through the guide hole. Drill the hole through the fixing plate down into the floor and secure the guide tool by stepping on the flat part.
3. When an anchoring rod is used, make sure to allow the mortar to dry according to the manufacturer's instructions.
4. When an expanding anchor is used, make sure to also follow the manufacturer's instructions.
5. Use prescribed sealing washer(s) and fasten with dome-headed nuts using a maximum torque of 10-12 Nm.



DECLARATION OF CONFORMITY CERTIFIED HYGIENIC LEVELLING FEET

CE



NGI fundamentally adheres to all applicable directives and standards. All information is based on the current state of knowledge and is subject to change. We attentively follow the revisions and amendments to these directives and will design our products accordingly. This ensures that products from NGI are always in compliance with currently valid requirements.

Our product category is not covered by the scope of application of the EC directive for machinery. For this reason, they cannot be furnished with the CE marking in accordance with the EC directive for machinery.

NGI A/S, Virkelyst 3-7, 9400 Nørresundby, Denmark, hereby declares that the design is according to 3-A, USDA & EHEDG guidelines and regulations specified in the following.

Furthermore, we declare that the listed materials applied in our products comply with the demands for materials used within the food and pharmaceutical industries.



DECLARATION OF CONFORMITY CERTIFIED HYGIENIC LEVELLING FEET

Materials, Surface Roughness, Fabrication and Geometry

Metallic surfaces are constructed from AISI 304 grade stainless steel and are corrosion resistant under the specified conditions of use including those of cleaning. The elastomeric components are constructed from FDA approved NBR and TPE Santoprene® rubber material. The sealing washers are constructed from Aramid fiber material. All materials used are considered non-toxic and are non-absorbent.

All exposed metallic surfaces are finished to maximum surface roughness values of 1.6 µm Ra. All elastomeric components and sealing washers are left as moulded with no hand trimming and all surfaces are considered smooth enough to ensure superior cleanability.

There are no exposed dissimilar metal-to-metal contact areas in the construction where galvanic corrosion could occur.

Hygienic seals permit access for easy cleaning with no inaccessible pockets or crevices.

There is no risk of exposed threads and no unsealed metal-to-metal joints in the finished construction.

All exposed surfaces have a smooth finish so that soil may be cleaned from the surface using manual cleaning techniques and be free of pits, folds, cracks, crevices, and other imperfections in the final fabricated form.

Drainability and Installation

The levelling feet are designed to be self-draining and contain no horizontal ledges. Comprehensive instructions are provided containing detailed information to ensure compliance with the 3-A, USDA & EHEDG design criteria.

The 3-A Sanitary Standard 88-00 requires that when levelling feet are properly mounted on the equipment, they shall provide a minimum clearance between the lowest part of the equipment and the floor of no less than 4.0 inches (102 mm) if the equipment outlines an area in which no point is more than 12.5 inches (318 mm) from its' nearest edge. If the equipment outlines an area in which any point is more than 12.5 inches (318 mm) from its' nearest edge the clearance shall be at least 6 inches (152 mm).

The EHEDG guideline recommends a minimum clearance between the equipment and the floor or wall of 300 mm for easy cleaning and inspection.

When fasteners are required only dome nuts must be used. The exposed interfaces shall be sealed with sealing washers and there must be no threads exposed in the installed configuration of the levelling feet.

DECLARATION OF CONFORMITY

CERTIFIED HYGIENIC LEVELLING FEET

Maintenance and Cleaning

Foot bases can be sealed to the floor if required. And the installation instructions make recommendations not to span over floor imperfections or grout lines without the addition of proprietary sealing compounds.

Maximum torque values are specified as appropriate on fastening arrangements to avoid over-compression of sealing washers and gaskets.

Maintenance instructions are clearly defined and prohibit the use of non-genuine replacement parts.

Cleaning instructions describe typical cleaning procedures with recommended maximum temperatures/pressures and stipulate the use of non-abrasive cleaning aids.

The design does not contain dead spaces and avoid accumulation of soil, microorganism's insects and other vermin in areas which cannot be easily cleaned.

Adhesives, Lubricants, Insulation and Signal Transfer Liquids

Sealing and thread locking compounds used in the construction are non-toxic in the cured state.

No lubricants, insulation material or signal transfer liquids are used in the construction.

Standards and directives

EN 1672-2:2005 Food machinery / General design principles/Part 2: Hygiene requirements.

EN ISO 14 159 2004 Safety of machinery – Hygiene requirements for the design of machinery.

Document 13 EHEDG guideline on the hygienic design of apparatus for open processes.

EHEDG Class I: The hygienic design criteria evaluation report concludes that the designs meet the criteria for hygienic equipment class I for components situated in the non-food area and are accessible for easy cleaning without dismantling.

3-A sanitary standard for machine levelling feet and supports.

USDA Guidelines for the sanitary design and fabrication of dairy processing equipment June 2001.

EU regulations

852/2004 on the hygiene of foodstuffs.

853/2004 specific hygiene rules for food of animal origin.

854/2004 specific rules for the organization of official controls on products of animal origin intended for human consumption.

1935/2004 on materials and articles intended to come into contact with food.

DECLARATION OF CONFORMITY

CERTIFIED HYGIENIC LEVELLING FEET

The declaration of materials concerns the following Applications

Application:	Steel components, e.g. spindle, sleeve and cover for foot
Material type:	Stainless steel, AISI 304/A2 (X5CrNi18-10), Euro norm 1.4301. By request: Stainless steel, AISI 316/A4 (X 5 CrNiMo 17 12 2), Euronorm 1.4401
Compliance:	EN 10204 Type 2.2. NGI A/S states that the product is in compliance with the order with indication of results of nonspecific inspection.
	NGI A/S has got EN 10204 type 3.1 inspection certificates on all material used in the products but not specified for each foot.
	In the directive 94/9/EC, Equipment for potentially explosive atmospheres, also known as the ATEX directive, equipment without its own potential source of ignition are not covered, nor shall be marked according to the directive. However, NGI levelling feet are suitable for use in all ATEX zones.
Application:	Foot base for NGI A/S's hygienic machine feet
Material type:	NBR (NNF-75)
Color:	Black
Hardness:	72 ± 3 Shore A DIN 53 505
Range of temperature:	Min -35°C to Max +110°C
Compliance:	
REACH:	In accordance with regulations EC 1907/2006. Candidate List of Substances of very High Concern (16.06.2014). Substances listed in Annex XIV (14.08.2014). Substances listed in Annex XVII (08.05.2014).
RoHS & RoHS 2	In accordance with the directive 2002/95/EC OF EUROPEAN PARLIAMENT AND OF THE COUNCIL OF 27 JANUARY.
ADI free:	Does not contain any substances originating from humans or animals.
Bisphenols:	Does not contain Bisphenols as described in 1895/2005/EEC. Nor BPA, BADGA, BFDGE or NOGE.
ODS:	Does not contain ozone depleting substances. In accordance with the Regulation EC 1005/2009 OF EUROPEAN PARLIAMENT AND OF THE COUNCIL OF 16 SEPTEMBER 2009 and Regulation EC 2037/2000 OF EUROPEAN PARLIAMENT AND OF THE COUNCIL OF 29 JUNE 2000. Conflict In accordance with US Law: "Dodd Frank Wall Street Reform & Consumer
Materials:	Protection Act", sec. 1502, of 21.07.2010.
GMP:	Good manufacturing process in accordance with 2023/2006 EC.
Hazardous materials:	Does not contain any hazardous substances as described in the Hong Kong International Convention for the Safe and Environmental. Sound Recycling of ships, 2009.
Phthalates:	Does not contain phthalates. FDA: Guideline 21 CFR 177.2600
Application:	Sealing ring between steel components for NGI's machine feet.
Material type:	Silicon rubber
Hardness:	60 Shore A
Color:	RAL 5010 (blue)
Range of temperature:	Min -60°C to Max +200°C
Storage:	According to ISO 2230
Compliance:	FDA: Guideline 21 CFR 177.2600 RoHS 2: In accordance with the Directive 2011/65/EC OF EUROPEAN PARLIAMENT AND OF THE COUNCIL. GMP: Good manufacturing process in accordance with 2023/2006 EC.

TECHNICAL SPECIFICATIONS

TERMS OF SALES & DELIVERY

1.0 Scope of application of terms and conditions of sales and delivery

- 1.1 The current terms and conditions of sales and delivery apply to all NGI A/S offers, sales and deliveries unless agreed to the contrary in writing.
- 1.2 Final agreement of delivery is first entered into on the purchaser's receipt of NGI A/S written confirmation of order and only the content of the confirmation of order applies to NGI A/S.

2.0 Delivery and dispatch

- 2.1 Delivery takes place ex factory from NGI A/S, Virkelyst 5, 9400 Nørresundby, Denmark, directly from store including packaging.
- 2.2 Orders which are received by NGI A/S before 13.00 Danish time (12.00 GMT) are dispatched the same day unless expressly agreed to the contrary.

3.0 Terms of payment

- 3.1 Payment must be made at latest by the date stated as the last punctual payment day on the invoices sent by NGI A/S.
- 3.2 If payment is made after the due date NGI A/S is entitled to charge interest on the outstanding amount from the due date at a rate of 2% per started month.

4.0 Liability, defects and delays

- 4.1 NGI A/S is obliged to rectify all defects due to imperfections in construction, material or production by making repairs or replacement of the delivery according to points 4.2 - 4.12.
- 4.2 NGI A/S liability only includes defects which appear within one year from the day of taking possession of the delivered goods. If the delivered goods are used more intensively than agreed or more intensively than presupposed on entering into the agreement, this period is shortened proportionally.
- 4.3 For parts of the delivery which are repaired or exchanged in accordance with point 4.1 NGI has the same obligations which apply to the original delivery for a period of one year. For the remainder of the delivered goods the period mentioned in point 4.2 is only prolonged by the period of time in which the delivery has not been applicable because of defects, dealt with in point 4.1
- 4.4 The purchaser must report a defect to NGI A/S in writing and without unreasonable delay following discovery of the defect. The message must contain a description of how the defect manifests itself. If there is reason to believe that the defect can cause risk of damage, such a message must be given immediately. If the purchaser does not inform NGI A/S in writing about a defect within the period of time stated in this point, the purchaser foregoes the right to make demands in connection with the defect.
- 4.5 On receipt of a written message with reference to point 4.4 NGI A/S must rectify the defect without unreasonable delay. NGI A/S must bear the costs of rectification with reference to the stipulations in points 4.1 - 4.12.
Rectification of the defect shall be carried out at the place of installation, unless NGI A/S finds it suitable for the defective part or materials to be returned so that NGI A/S can make repairs at NGI A/S's premises or provide a replacement.
NGI A/S obligation concerning the defective part is fulfilled when NGI A/S has delivered a duly repaired or exchanged part to the purchaser.
- 4.6 If the purchaser has given such a message as mentioned in point 4.4, and it transpires that there is no defect for which NGI A/S carries responsibility, NGI A/S has the right to remuneration for work done and the costs which the claim has caused to NGI A/S.
- 4.7 If possible demounting and installation necessitates intervention in other things than the delivered goods, the work and the costs hereby incurred are carried by the purchaser.

TECHNICAL SPECIFICATIONS

TERMS OF SALES & DELIVERY

- 4.8 Any dispatch in connection with repair or exchange shall take place at NGI A/S expense and risk. The purchaser must follow NGI A/S instructions concerning despatch. The purchaser must carry the extra costs which are caused to NGI A/S when rectifying defects if the delivered goods are in another place than the place of installation.
- 4.9 Defective parts which are exchanged with reference to point 4.1 must be placed at NGI A/S disposal and become NGI A/S's property.
- 4.10 If NGI A/S has not fulfilled its obligations within a reasonable time according to point 4.5, the purchaser can give NGI A/S in writing a last opportunity to do so. If the obligations are not fulfilled within the determined time, the purchaser is entitled to:
 - a) let the necessary repairs be carried out and/or have new parts made at NGI A/S expense and risk, provided that the purchaser does this in a sensible and reasonable way or
 - b) demand a proportional discount up to a maximum 15% of the contract sum.If the defect is essential, the purchaser can alternatively cancel the agreement in writing to NGI A/S. The purchaser also has the right to thus cancel the agreement if the defect, following the steps mentioned under point
 - a) still remains essential. On cancellation the purchaser can demand compensation for the loss up to a maximum 15% of the contract sum.
- 4.11 NGI A/S's liability does not include defects caused by material which is provided by the purchaser, by constructions which are prescribed or specified by the purchaser or by faulty preparatory work on the purchaser's side.
- 4.12 NGI A/S's liability only includes defects which appear under those in the agreement's presupposed working conditions and under correct use of the delivered goods.
The liability does not include defects caused by circumstances occurring after taking over possession of the delivered goods. It does not for example include defects which are caused by defective maintenance on the purchaser's side, or changes to the delivered goods made by the purchaser without NGI A/S's written consent or repairs which the purchaser has carried out in a faulty manner. The liability does not include normal wear and tear and depreciation.
- 4.13 NGI A/S has no liability for defects besides those described in points 4.1 - 4.12. This applies to any loss which the defect might cause, including loss on operations, lost earnings and other financial consequence loss. This limitation of NGI A/S's liability does not apply if NGI A/S is guilty of gross negligence.

5.0 Liability for damage caused by the delivered goods after taking possession (product liability)

- 5.1 The purchaser shall indemnify NGI A/S to the extent that NGI A/S has imposed liability to a third party for such damage and such loss which NGI A/S according to this point's second and third sections is not liable to the purchaser.
NGI A/S is not responsible for damage caused by the delivered goods after possession has been taken:
 - a) on real property or movables which occurs while the delivered goods are in the purchaser's possession.
 - b) on products which are produced by the purchaser, or on products where these form a part, or on damage to real property or movables which these products cause due to the delivered goods.In no case is NGI A/S responsible for operational loss, lost earnings or other financial consequence loss. The stated limitations in NGI A/S's liability do not apply if NGI A/S is guilty of gross negligence. If a third party makes a demand on one of the parties concerning liability to pay compensation with reference to this point, this party must immediately inform the other party.

6.0 Venue

- 6.1 Disagreement between the parties must be ruled on according to Danish law and with Sø- og Handelsretten in Copenhagen as the venue.

Date of publication: June 2017

All information in this product catalogue is subject to change without prior notice.

(C) All Rights Reserved