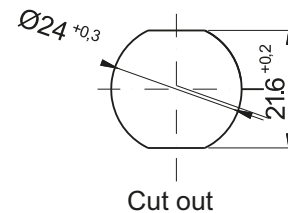


Pic.1 Lock in the closed position.
The arrow means the direction opening the lock



Lock on the drawing in the left door version
The possibility adapting the lock to the door right (Pic.1).

Insert										Finish [C]		
										Nickel	RAL 9005	RAL 7035
T6	T8	T9	L	KW 8	S	N	C9	D3	D5	02	04	05
NAME		COMPONENTS				MATERIAL						
Lock M24B		Housing				ZAMAK5						
		Cam, insert				Steel zinc plated						
		Blocade				Stainless steel						

How to order :

M24B — T9 — 20 — C — L

Type of lock _____

Type of insert _____

Height of cam H =20, 23, 26 _____

Finish _____

Type of lock (RH - Right, LH-Left) _____

* possibility to make in another dimension