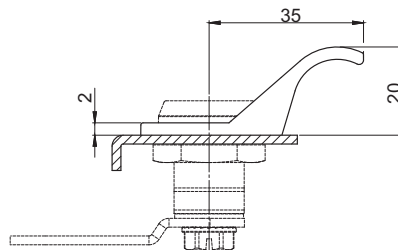
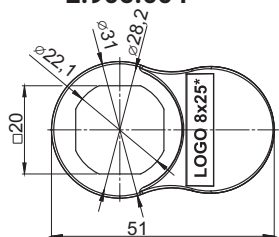
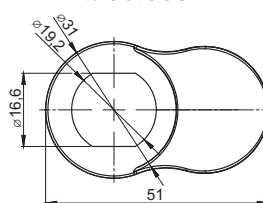


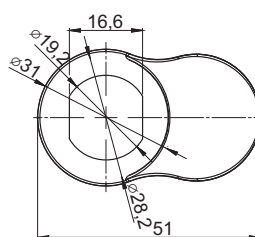
**2.905.004**



**2.905.003A**



**2.905.003B**

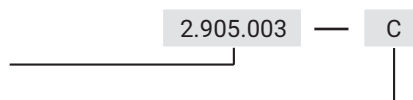


CATALOGUE NO.	DETAIL	MATERIAL	FINISH [C]	
			RAL 9005	RAL 7035
2.905.001	Handle	Polyamide	07	08
2.905.002				
2.905.003A	Handle for lock M19	Polyamide	07	08
2.905.003B				
2.905.004				

How to order :

Catalogue no.

Finish



\* Optional logo on the handle 2.905.904 with dimension 8x25 mm.

Handle for lock 2.905.004 is fitted with all locks M22 with the outside diameter of flanged housing  $\varnothing 28$ .

2.905.003 and 2.905.013 are fitted with locks M19W, M19DC, Z-2106, 2.612.001.