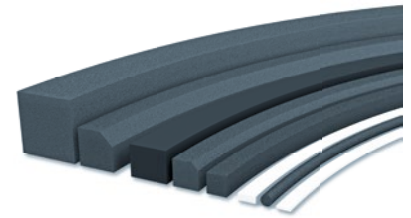


# BM Foam Strips



Industry-specific applications



## Nitrile foam strip: 10m roll

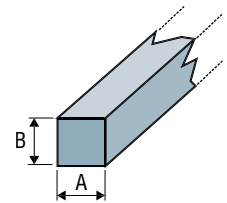
### Mounting

Mounting with contact adhesive or flush-mounted at a depth adapted to the height and potential flush-mounting of the seal subject to the vacuum: 50% to 70% of the new height.

References	A	B
BM 1510	15	10
BM 1010	10	10
BM 1515	15	15
BM 2020	20	20
BM 3030	30	30

### Support

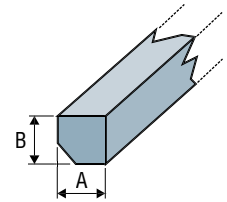
- All supports, particularly steel, aluminum, etc.
- Closed cells.
- Tube of neoprene adhesive (120 ml): Part No. 095.99.006.



## Nitrile beveled foam strip: 10m roll

- The beveling facilitates gripping of products with uneven surfaces.
- Closed cells.
- Contact adhesive reference: BOSTIK 1400 (Neoprene adhesive).

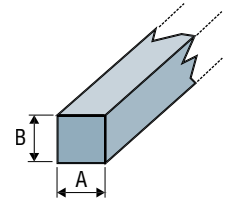
References	A	B
BM 2020 SPTR	20	20
BM 3020 SPTR	20	30
BM 3030 SPTR	30	30



## Silicone foam strip

- Heat resistant: 160°C.
- Do not use on parts before painting.
- Closed cells.
- Contact adhesive reference: LOCTITE 5366 (silicone adhesive).

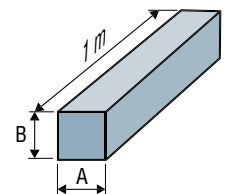
References	A	B
BM 210 SI	10	2
BM 513 SI	13	5
BM SI 3030	30	30



## Natural rubber foam strips: Length 1m

- Flush-mounting.
- Use with turbine (strong suction) for gripping products with very uneven surfaces, such as slabs of washed gravel.
- Open cells.
- Contact adhesive reference: BOSTIK 1400 (Neoprene adhesive)

Reference	A	B
BMS 3025	30	25



Please specify the part e.g.: BM1510  
See part n° table above.

Note: All dimensions are in mm